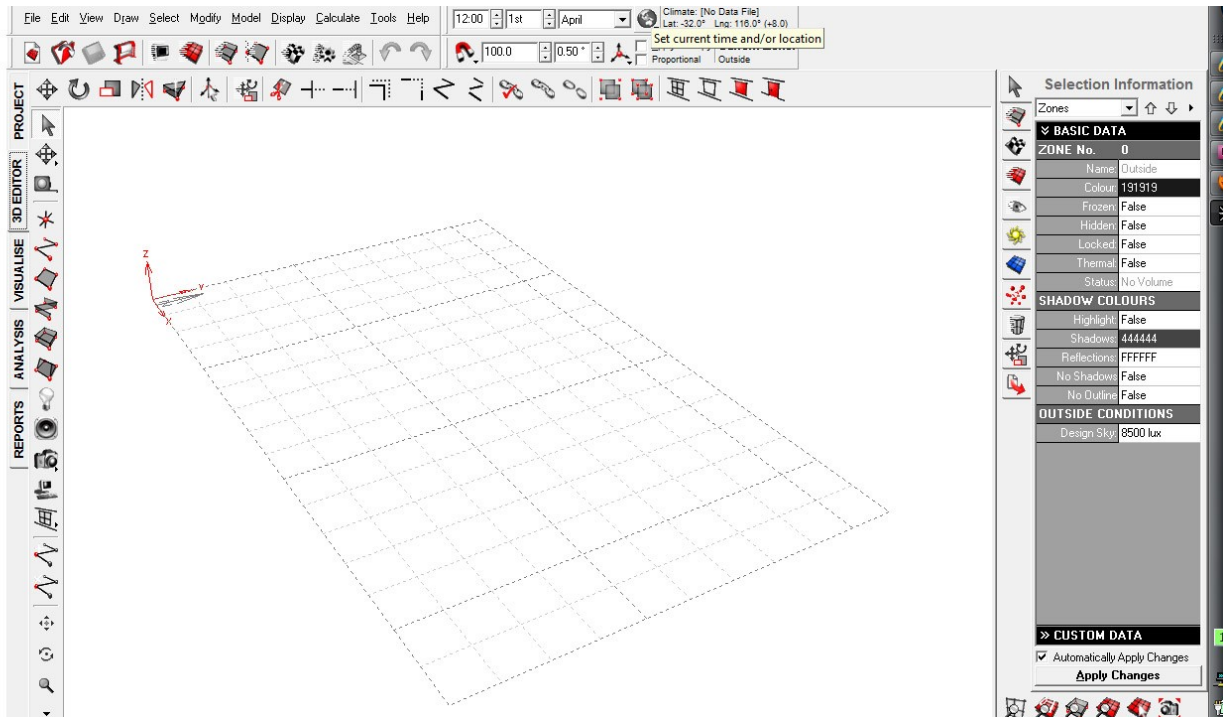


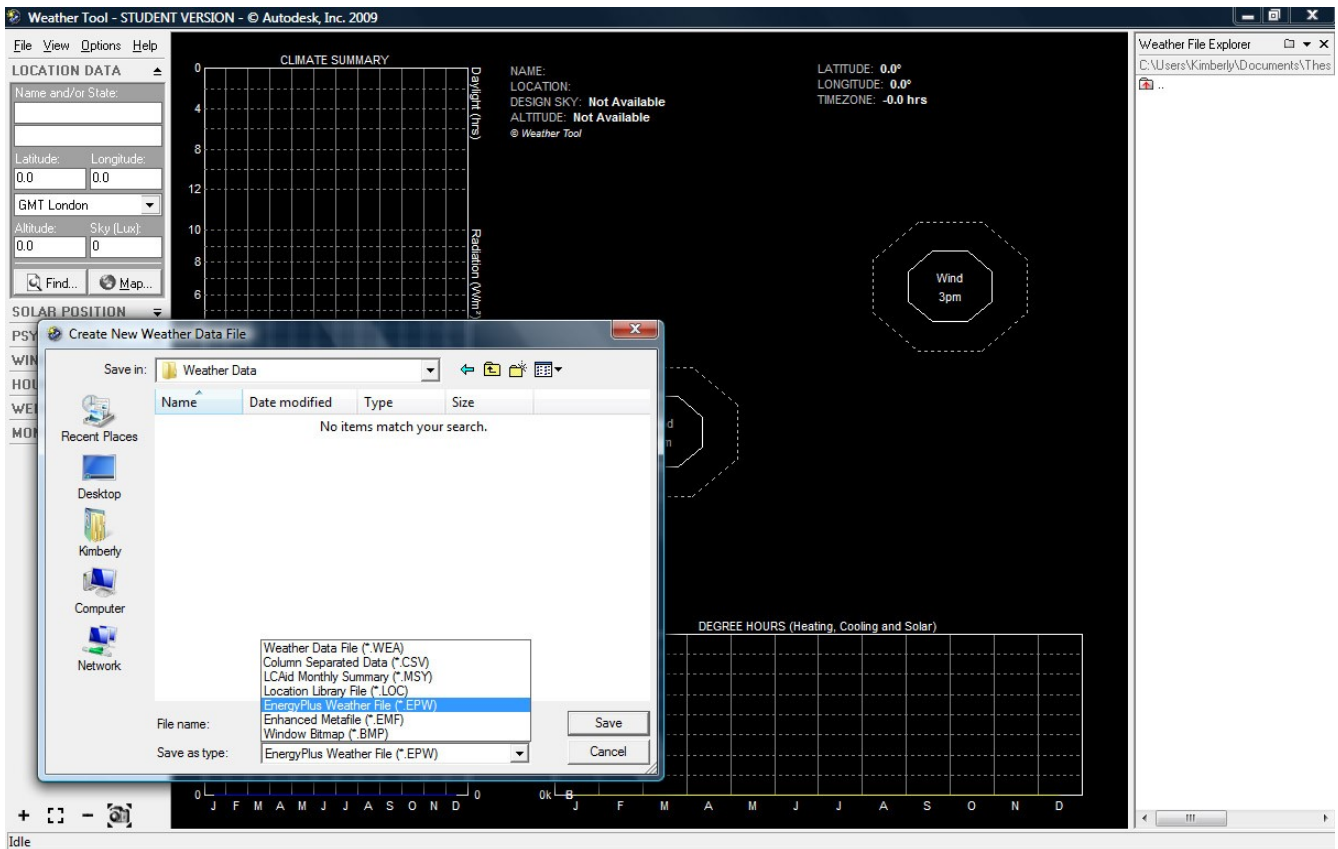
Ecotect Introductory Tutorial: How to import/load weather files?

Fall 2010

- 1.) Open Ecotect (Note: student versions of Ecotect 32 bit 2010 or Ecotect 32 bit 2011 can be readily accessed via the http://students.autodesk.com/?nd=m_home for up to 3 year activation.)
- 2.) Go to File → Open
- 3.) Click on World Icon > Load Weather File



- 3.) Weather Data within ecotect must be in WEA format.
- 4.) If the weather data is not located on your computer, download the weather data. Go to http://apps1.eere.energy.gov/buildings/energyplus/cfm/weather_data.cfm and follow the links for the appropriate location.
- 5.) Download the EPW(blue box) for climate zone by right-clicking save target as, and save it to C:\Program Files\Autodesk\Ecotect Analysis 2010\Weather Data
- 6.) Open the Weather Tool
The weather tool allows one to access locational data in hourly, weekly, or monthly periods. The reason for choosing .wea is because the format of the daata is determined by a fixed set of columns.



- 7.) Import the file you just saved- remember to change the file format to EPW
- 8.) Save the file as a wea file in the same location: C:\Program Files\Autodesk\Ecotect Analysis 2010\Weather Data