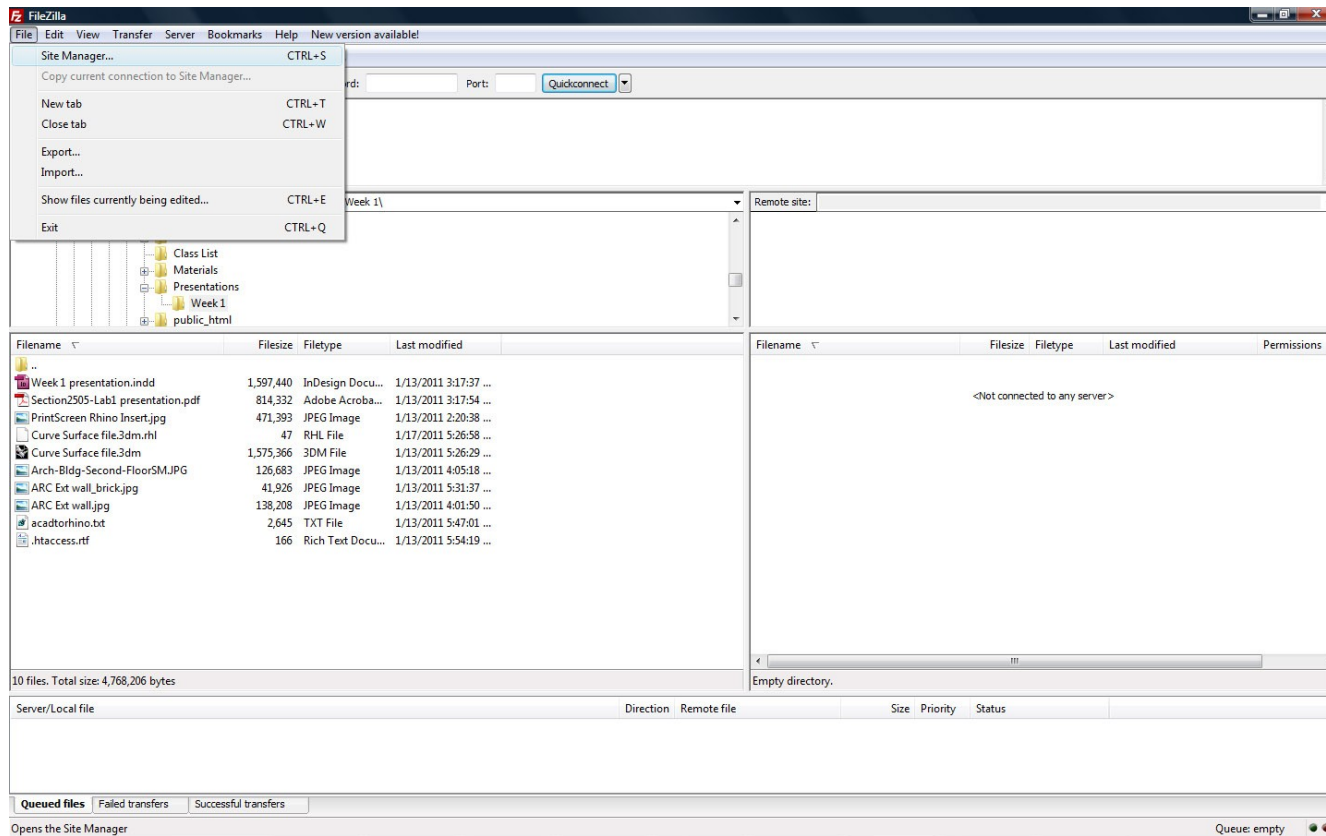


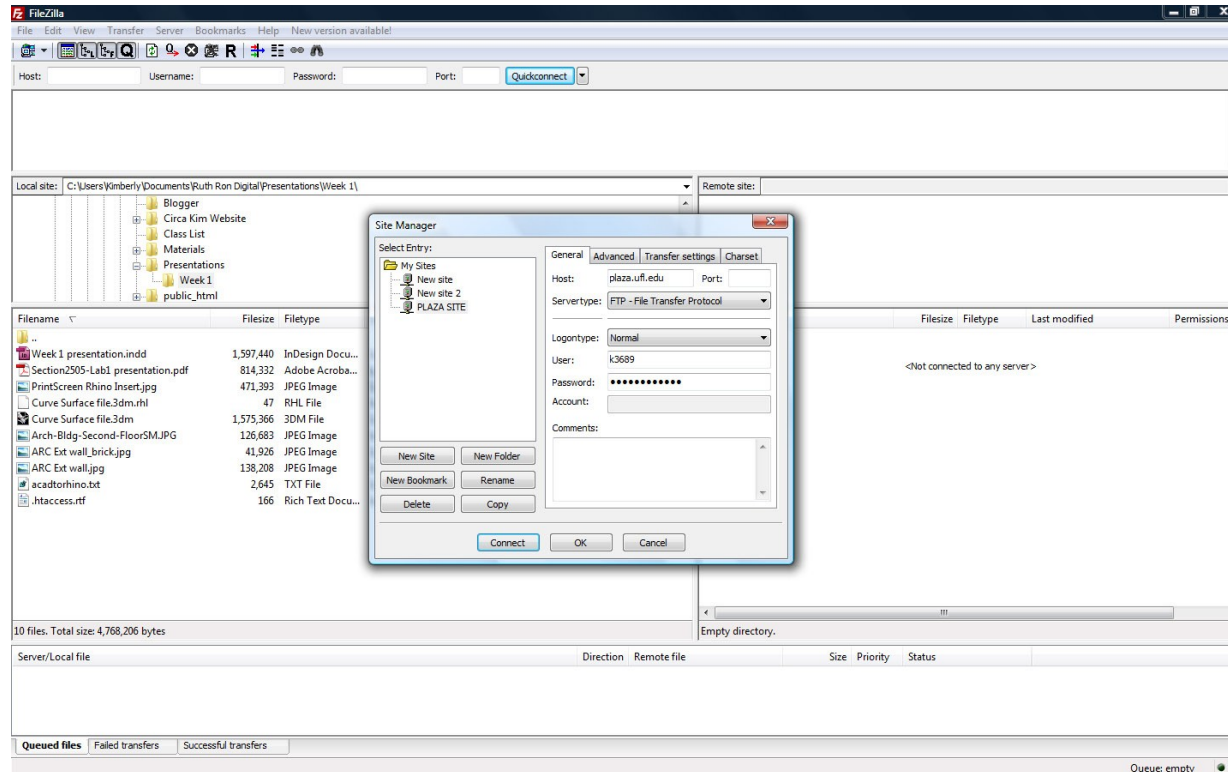
TUTORIAL: How to access UF Plaza Account from Home:

Plaza is a CIRCA server meant for personal web pages, and that space also is free. For project 2, you will upload your website to your plaza account.

- 1.) Download an FTP client share program. I suggest downloading FileZilla- a free ftp solution <http://filezilla-project.org/>
- 2.) After downloading the software, open up the program and go to FILE(on the top menu bar), and select SITE MANAGER(control S)

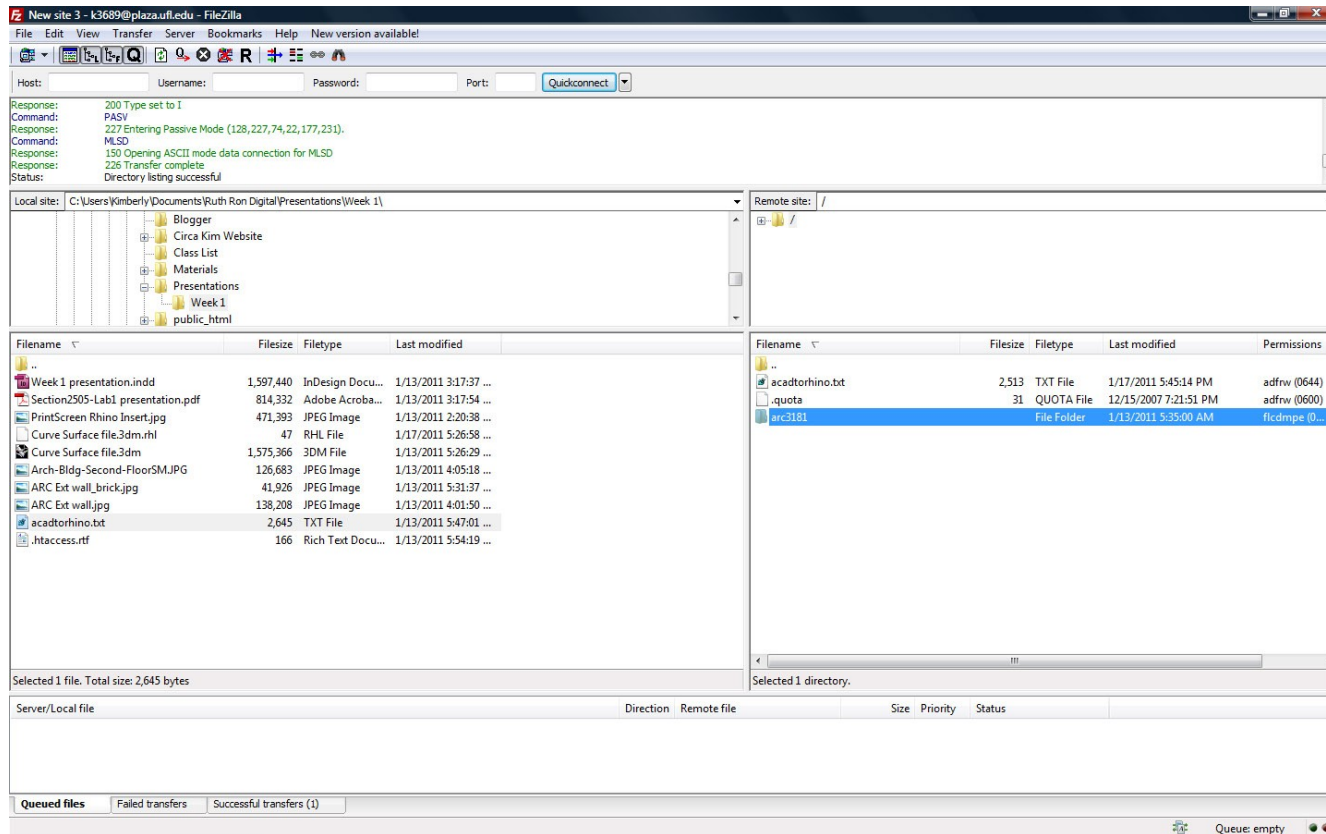


- 3.) Create a new site called PLAZA SITE and input the following information & SAVE
1. host: plaza.ufl.edu
 2. Servertype: FTP
 3. logintype: normal
 4. user: your Gatorlink name
 5. password: your Gatorlink password



- 4.) Now connect to the site after the information is saved, and you can drag and drop items from your computer, the lab computer to the plaza space. There is a 20 MB limit on your account, so be aware of your file sizes. You can use your 20 MB Plaza account for now, but it is best to always auto-save to your USB drive in the lab(Rhino>Properties >Autosave), and then place a backup on your external hard drive (at home) at least every week. Small flash USB drive 4 GB-10 GB (cost ~ \$10 online). If you don't already have one, I suggest you buy a large external hard drive (500 GB- 1 TB / cost ~\$85). [You don't necessarily want to bring your large external hard drive with you all the time because it could be damaged by walking/riding bike/etc]

5.)



6.) **For creating websites on your plaza account:** If you go to the Gatorlink home page, select "Modify," and select "Web space" you can make your Plaza account. This web space does not need a public_html directory. For a Plaza account, the address for viewing the page is <http://plaza.ufl.edu/<username>/page.htm> or To publish to your Plaza webspace, you will use the address <ftp://plaza.ufl.edu/<username>>