

FAST-TRACK

Recent invasion of the tropical Atlantic by an Indo-Pacific coral reef fish

LUIZ A. ROCHA,* D. ROSS ROBERTSON,* CLAUDIA R. ROCHA,* JAMES L. VAN TASSELL,†
MATTHEW T. CRAIG‡ and BRIAN W. BOWEN§

*Smithsonian Tropical Research Institute, Unit 0948, APO, AA 34002-0948, USA, †Biology Department, Hofstra University, Hempstead, NY 11549, USA, ‡Scripps Institution of Oceanography, Marine Biology Research Division, 9500 Gilman Dr., Mail Code 0208, La Jolla, CA 92093-0208, USA, §Hawaii Institute of Marine Biology, University of Hawaii, PO Box 1346, Kaneohe, HI 96744, USA

Abstract

The last tropical connection between Atlantic and Indian–Pacific habitats closed *c.* 2 million years ago (Ma), with the onset of cold-water upwelling off southwestern Africa. Yet comparative morphology indicates more recent connections in several taxa, including reef-associated gobies (genus *Gnatholepis*). Coalescence and phylogenetic analyses of mtDNA cytochrome *b* sequences demonstrate that *Gnatholepis* invaded the Atlantic during an interglacial period ~145 000 years ago ($d = 0.0054$), colonizing from the Indian Ocean to the western Atlantic, and subsequently to the central (~100 000 years ago) and eastern Atlantic (~30 000 years ago). Census data show a contemporary range expansion in the northeastern Atlantic linked to global warming.

Keywords: Agulhas leakage, biogeography, dispersal, mtDNA, phylogeography

Received 30 March 2005; revision received 21 June 2005; accepted 11 July 2005

Introduction

The boundaries of the present-day tropical Atlantic Ocean were formed by two geological events: (i) the closure of the eastern Tethys Sea as Africa collided with Eurasia 15–20 million years ago (Ma) (Smith *et al.* 1995) and (ii) the more recent (3.1–3.5 Ma) uplift of the Isthmus of Panama (Duque-Caro 1990). Subsequent faunal exchanges of tropical organisms between the Atlantic and Indian oceans through the sole remaining gateway, around South Africa, were strongly curtailed after the late Pliocene/early Pleistocene (~2 Ma) establishment of the Benguela upwelling system, which forms a cold-water barrier along the Atlantic coast of southern Africa (Shannon 1985). However, morphological similarities between Indian Ocean and Atlantic Ocean molluscs indicate successful late Pleistocene invasions via this route (Vermeij & Rosenberg 1993).

Four criteria can distinguish a recent invader: (i) morphology: the invader is similar to a sister taxon in another region (Vermeij & Rosenberg 1993); (ii) biogeography: the

invader is the sole representative of a genus that attains high diversity elsewhere (Vermeij 1991; Briggs 1995); (iii) palaeontology: the stratigraphy of fossil forms indicates recent colonization (Vermeij & Rosenberg 1993); and (iv) genetics: molecular clock estimates support a recent dispersal event (Bowen *et al.* 1994, 2001; Lessios *et al.* 2001). While conditions 1 and 2 can be evaluated for many shore fishes, condition 3 is very difficult to test due to an uneven fossil record. Condition 4 has rarely been tested on marine organisms.

The Atlantic goldspot goby, *Gnatholepis thompsoni*, is a prime candidate for a recent natural invader based on the first two conditions: it is morphologically very similar to a sister taxon in the Indian Ocean (*Gnatholepis scapulostigma*), and is the only representative of the genus *Gnatholepis* in the Atlantic, while there are eight species and subspecies in the Indo-Pacific (Randall & Greenfield 2001; Thacker 2004a).

To determine whether genetic data indicate a recent invasion of the Atlantic Ocean by *Gnatholepis*, we analysed 774 bp of the mtDNA cytochrome *b* gene in 133 *G. thompsoni* from the western, central, and eastern Atlantic (Fig. 1), 12 *G. scapulostigma* from the Indian and Pacific oceans

Correspondence: Luiz A. Rocha, Fax: +507 2128714; E-mail: rochal@naos.si.edu

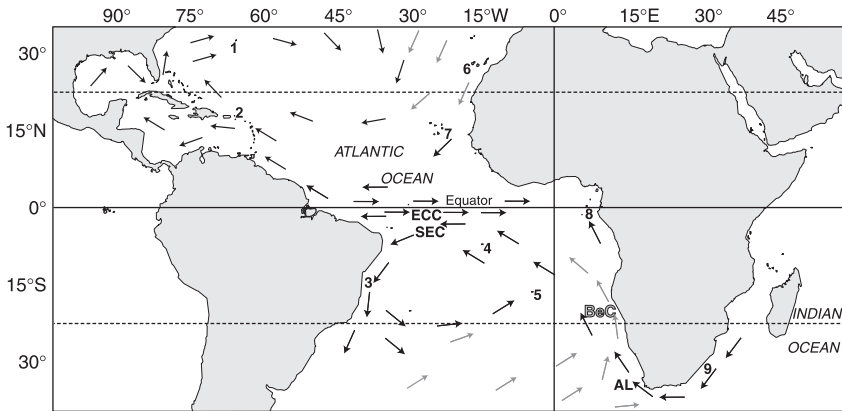


Fig. 1 Map of the Atlantic Ocean and the western Indian Ocean. Sampling sites in the Atlantic are numbered as follows: 1, Bermuda; 2, St Croix, USVI; 3, southeastern Brazil; 4, Ascension; 5, St Helena; 6, Canary Islands; 7, Cape Verde; 8, Sao Tome; 9, South Africa. Warm (black arrows) and cold (grey arrows) currents are indicated. Abbreviations of currents mentioned in the text: SEC, South Equatorial Current; ECC, Equatorial Counter Current; BeC, Benguela Current; AL, Agulhas leakage.

(eight from South Africa and four from the Cook Islands in the South Pacific), and four *Gnatholepis anjerensis* from the eastern Indian Ocean (Cocos Keeling Islands) for outgroup comparisons. This sampling design was intended to test the age of a putative Atlantic invasion, as well as dispersal pathways within the tropical Atlantic.

Materials and methods

Sample collection and sequencing

Fish were collected using microspearers, hand nets, or rotenone while scuba diving, between 1996 and 2004. Gills, muscle or fin tissues were preserved in 1.5 mL tubes containing a saturated salt-DMSO buffer, or 100% ethanol. Total genomic DNA was extracted by standard phenol-chloroform methods or using QIAGEN DNeasy extraction kits following the manufacturer's protocol. Extracted DNA was frozen in TE or AE buffer and archived at -20°C . Primer names indicate the DNA strand (H = heavy and L = light strand) and the position of the 3' end of the oligonucleotide primer relative to the human mitochondrial DNA sequence. A segment of 802 bp of the mtDNA cytochrome *b* gene was amplified with the primers L14725 (5'-GTGACTTGAAAAACCACCGTTG-3') and H15573 (5'-AATAGGAAGTATCATTCCGGTTTGATG-3') (Meyer 1993).

Thermal cycling in polymerase chain reactions (PCR) consisted of an initial denaturing step at 94°C for 1 min 20 s, then 30 cycles of amplification (30 s of denaturation at 94°C , 30 s of annealing at 52°C , and 55 s of extension at 72°C), and a final extension of 2 min 30 s at 72°C . Excess oligonucleotide primers were removed through simultaneous incubation of PCR product with exonuclease I and shrimp alkaline phosphatase (USB Corp.).

Sequencing reactions with fluorescently labelled dideoxy terminators (BigDye) were performed according to manufacturer's recommendations, and analysed with an ABI 377 or 310 automated sequencer (Applied Biosystems, Inc.). All samples were sequenced in the forward direction

with the primer L14725, but to ensure accuracy of nucleotide designations a subset of haplotypes were sequenced in both directions. Sequences of representative haplotypes have been deposited in GenBank. Copies of the complete data set are available from L.A.R. upon request.

Taxonomy of Indo-Pacific species

Although we follow the most recent nomenclatural rearrangement by Thacker (2004a), readers should be aware that the species she names *Gnatholepis scapulostigma* (formerly *Gnatholepis cauerensis*) is under investigation, and name changes are possible (J. Randall, D. Greenfield & H. Larson, personal communication). We refrain from using the name *G. thompsoni* for Pacific populations of putative *G. scapulostigma* (*sensu* Thacker 2004a) because the former is not defined by either geography, morphology or nuclear genes. Due to the instability of nomenclature in this group, we maintain voucher specimens and tissue of our South Africa samples at the Scripps Institution collection, with numbers SIO 04-51, 04-58, 04-59, 04-61, 04-63 and 04-64.

Mutation rates and coalescent analyses

Mutation rates in many tropical marine organisms can be estimated using the divergence of sister species that were formed by isolation due to the closure of the Isthmus of Panama, 3.1–3.5 Ma (Bermingham *et al.* 1997; Knowlton & Weigt 1998). As *Gnatholepis* lacks a species in the eastern Pacific (Robertson & Allen 2002) we could not directly estimate the mutation rate in this genus. Here we use a proxy estimate derived from sequences of the same fragment from an Atlantic and eastern Pacific pair of sisters species in the genus *Evorthodus* (two specimens of *Evorthodus lyricus* from the Caribbean Panama and Florida and two specimens of *Evorthodus minutus* from the eastern Pacific Panama and Mexico, the only members of this genus), which is closely affiliated with *Gnatholepis* in the subfamily

Gobionellinae (Thacker 2003). As *Everthodus* spp. live in estuaries (e.g. Robertson & Allen 2002), they should have been separated during the final closure of the Isthmus of Panama (3.1–3.5 Ma). The mutation rate (λ) in *Evorthodus* was estimated by solving the equation $\lambda = d/2T$, where T is the time since divergence (in years) between the lineages and d the genetic distance. The d of 0.135 was obtained when comparing cytochrome *b* sequences from the two species using a nucleotide substitution model (TrN), optimized for our data set using a maximum-likelihood (ML) approach calculated in MODELTEST (Posada & Crandall 1998). With a $T = 3.1$ to 3.5 million years (Myr), we calibrated the mutation rate within lineages at 1.93–2.17% per Myr ($\lambda = 1.93$ to 2.17×10^{-8}). While this rate must be regarded as provisional for *Gnatholepis*, it is within the range accepted for mtDNA protein-coding regions of bony fishes (Bermingham *et al.* 1997; Bowen *et al.* 2001; Muss *et al.* 2001).

Genetic distances within *Gnatholepis* were calculated under the Tamura–Nei (Tamura & Nei 1993) nucleotide substitution model (TrN + γ , with $\gamma = 0.9756$), optimized for our data set using an ML approach calculated in MODELTEST (Posada & Crandall 1998). The minimum-spanning network was built using TCS version 1.13 (Clement *et al.* 2000). Population differentiation was calculated through an analysis of molecular variance (AMOVA), conducted using the program ARLEQUIN version 2.000 (Schneider *et al.* 2000).

Two coalescence analyses were applied to our data set and used to estimate the time frame for population events in the Atlantic Ocean, both assuming the mutation rate of 1.93 to 2.17×10^{-8} substitutions per site per year, and a generation time of 1 year. Both coalescence methods assume that the populations are undergoing a continuous expansion that persists today. In order to test if this assumption was acceptable, we calculated mismatch distributions using DNASP (Rozas *et al.* 2003), and observed that all populations fitted the model of rapid expansion with an $\alpha = 0.05$.

Putative population ages on both methods were also calculated using a range of molecular clock rates from 1% to 4% per Myr to accommodate potential errors in the timing of speciation events in *Evorthodus* and the geological event used to calibrate the clock. The first method involves the calculation of the mutation rate per haplotype $v = m\mu$, where m is the sequence length and μ , the mutation rate in years. The coalescence time was estimated by solving the equation $t = \tau/2v$ (Harpending *et al.* 1993). The parameter τ was estimated using the computer program DNASP (Rozas *et al.* 2003). Fu's F_S test (Fu 1997), implemented in the same program, was used to test for evidence of recent population expansion.

In the second method, the ML estimate of the growth parameter (G) was calculated for the Atlantic populations

using FLUCTUATE version 1.4 (Kuhner *et al.* 1998). This analysis was performed 10 times, using randomly generated seeds, a search strategy of 20 short and 5 long Monte Carlo chains of 200 and 20 000 steps, respectively, and a sampling increment of 20. The mean of G and its standard deviation from the 10 runs were used to estimate the time to most recent common ancestor.

Results

Within the Atlantic, we found 62 haplotypes among 133 individuals of *Gnatholepis thompsoni*. Overall haplotype diversity was higher in the western Atlantic ($h = 0.96 \pm 0.018$) and St Helena ($h = 0.95 \pm 0.037$), followed by the eastern Atlantic ($h = 0.62 \pm 0.081$), and Ascension Island ($h = 0.46 \pm 0.128$; Table 1). Genetic distances among populations (pairwise Φ_{ST}) demonstrate strong subdivisions within the Atlantic, corresponding to the western, central, and eastern regions (overall $\Phi_{ST} = 0.474$; Table 2). No significant population structure was observed among locations within each of the three regions, except between the mid-Atlantic islands (Ascension and St Helena; $\Phi_{ST} = 0.392$, $P < 0.001$). Three shallow Atlantic lineages were resolved (Fig. 2), which correspond to the western, central, and eastern subdivisions detected with AMOVA. Significant negative values of Fu's F_S were observed in all Atlantic populations (-23.9 , -5.4 and -10.3 , for western, central and eastern Atlantic respectively; all $P < 0.01$).

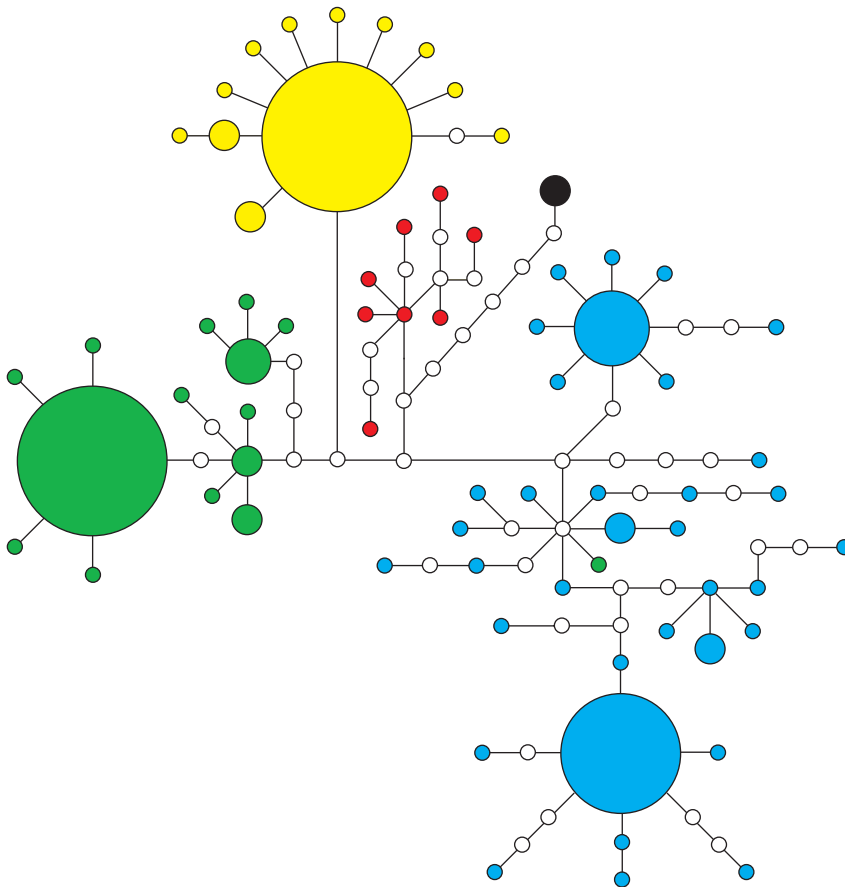
The sequences of the sister species pair *G. thompsoni* and *Gnatholepis scapulostigma* were highly divergent from those of the outgroup *Gnatholepis anjerensis* ($d = 0.11$ – 0.14). *G. scapulostigma* specimens contained two lineages ($d = 0.03$), one of which (representing all individuals from eastern South Africa and one from the Pacific Ocean) was very

Table 1 Sample sizes (N), haplotype number (H), haplotype diversity (h) and nucleotide diversity (π) for *Gnatholepis thompsoni* in the Atlantic Ocean and *Gnatholepis caurensis* in the Indian Ocean (South Africa). In the text, West Atlantic locations refer to Bermuda, St Croix, and SE Brazil, central Atlantic locations include the islands of Ascension and St Helena, and East Atlantic locations include Sao Tome, Cape Verde, and Canary Islands. Location numbers correspond to those in Fig. 1

Location	N	H	h	π
1. Bermuda	20	16	0.97 ± 0.028	0.007 ± 0.004
2. St Croix	30	21	0.96 ± 0.023	0.008 ± 0.004
3. SE Brazil	3	2	0.89 ± 0.160	0.001 ± 0.001
4. Ascension	23	7	0.46 ± 0.128	0.002 ± 0.001
5. St Helena	14	10	0.95 ± 0.037	0.004 ± 0.003
6. Canary Islands	24	5	0.62 ± 0.091	0.001 ± 0.001
7. Cape Verde	12	6	0.68 ± 0.148	0.001 ± 0.001
8. Sao Tome	7	3	0.52 ± 0.208	0.001 ± 0.001
9. South Africa	8	8	0.99 ± 0.062	0.004 ± 0.002

Table 2 Pairwise Φ_{ST} among Atlantic Ocean locations. Significant values ($P < 0.01$) indicated with an asterisk (*)

Location	Pairwise Φ_{ST}						
	1	2	3	4	5	6	7
1. Bermuda	—						
2. St Croix	0.001	—					
3. SE Brazil	0.001	0.001	—				
4. Ascension	0.595*	0.557*	0.561*	—			
5. St Helena	0.420*	0.395*	0.397*	0.392*	—		
6. Canary Islands	0.477*	0.426*	0.432*	0.797*	0.602*	—	
7. Cape Verde	0.395*	0.356*	0.362*	0.771*	0.522*	0.017	—
8. Sao Tome	0.353*	0.323*	0.328*	0.774*	0.488*	0.042	0.001

**Fig. 2** Minimum-spanning network showing relationships among *Gnatholepis* mtDNA haplotypes. Haplotypes observed in the western, central and eastern Atlantic are indicated with blue, green and yellow branches, respectively. Red circles represent the closely related *Gnatholepis scapulostigma* from South Africa, and black represents *G. scapulostigma* from the central Pacific. The sizes of the coloured circles are proportional to haplotype frequencies. Small, uncoloured circles represent intermediate haplotypes not observed in our survey.

closely related to the Atlantic *G. thompsoni* ($d = 0.0054$). These two lineages were also observed in studies of Pacific Ocean *Gnatholepis* using mtDNA ND2 sequences (Thacker 2004a, b). Using the two coalescent methods, we estimated the time to the most recent common ancestor (TMRCA) between the Atlantic *G. thompsoni* and the Indo-Pacific *G. scapulostigma* at ~130–155 thousand years ago (kyr BP). Even if we use the most conservative mutation rate, which

produces an estimate of 268 kyr for the age of the Atlantic population (Table 3), this represents the most recent date for a natural invasion of the Atlantic by a tropical reef fish (Bowen *et al.* 2001). Our coalescent estimates also demonstrate that the western Atlantic population is the oldest (115–139 kyr), followed by the central Atlantic island of St Helena (83–115 kyr), while Ascension and the eastern Atlantic are the youngest (both less than 30 kyr; Table 3).

Table 3 Results of the coalescent analyses. Location names are: EA, eastern Atlantic; Asc, Ascension; StH, Saint Helena; WA, western Atlantic; AO + IO, Atlantic Ocean + Indian Ocean. Age estimates are calculated with mutation rates of 1.93–2.17% per million years, the range (in parenthesis) is calculated with mutation rates from 1% to 4% per million years. Age estimates for AO + IO (in bold) represent the time to the most recent common ancestor between Atlantic and Indian Ocean populations

Locations	Tau (τ)	τ Age estimate (range)	Growth parameter (G)	G Age estimate (range)
EA	0.844	25 125–30 289 (13 630–54 521)	8 412.5 \pm 292.9	25 228–28 365 (13 686–54 745)
Asc	0.512	15 241–18 374 (8 268–33 074)	10 000.0 \pm 322.8	21 221–23 860 (11 512–46 051)
StH	2.821	83 354–100 488 (45 219–160 878)	2 063.2 \pm 59.9	102 869–115 661 (55 806–188 227)
WA	4.012	116 100–139 965 (62 984–192 937)	1 848.2 \pm 55.2	115 211–129 538 (62 502–206 009)
AO + IO	4.397	130 687–146 938 (70 897–219 491)	1 446.4 \pm 33.7	146 763–155 013 (79 616–268 476)

Discussion

Both the star-shaped haplotype network (Fig. 2) within each of the three lineages, and significant negative values of Fu's F_S for each lineage indicate recent population expansions at all Atlantic locations (Fu 1997; Avise 2000). Fu's F_S test is designed to detect genetic signatures of selection, but it is also sensitive to population expansion. The latter explanation has strong independent corroboration for Atlantic reef organisms. Reef habitats were reduced by 90% in the Caribbean during the last glacial maximum (20 000 years ago), when the sea level was at least 100 m below current levels (Bellwood & Wainwright 2002). Thus recent population expansions by *Gnatholepis thompsoni* probably occurred during the current interglacial period, in response to greatly increasing habitat availability.

Previous palaeontological and phylogenetic research has demonstrated colonizations of the Atlantic from the central Pacific before the closure of the Isthmus of Panama (3.1–3.5 Ma), and possibly more recent colonizations from the Indian Ocean via southern Africa (Vermeij & Rosenberg 1993). Three lines of evidence indicate that *Gnatholepis* colonized the Atlantic from the Indian Ocean rather than the central Pacific: (i) genetic divergence between Atlantic and Indian Ocean *Gnatholepis* taxa is one order of magnitude shallower than values observed in fishes isolated by the Isthmus of Panama (Bermingham *et al.* 1997; Craig *et al.* 2004); (ii) *Gnatholepis thompsoni* probably did not occur throughout the Neotropics prior to the isthmian closure, as *Gnatholepis* does not currently occur in the eastern Pacific (Robertson & Allen 2002); (iii) *Gnatholepis thompsoni*'s virtually identical sister species, *Gnatholepis scapulostigma*, is widely distributed in the Indian Ocean, including SE Africa, from where the Agulhas leakage feeds pulses of tropical water into the south Atlantic during warm interglacial periods (Peeters *et al.* 2004). Thacker (2004a) also suggested that *G. thompsoni* may have invaded the Atlantic

coming from around South Africa, but stressed that more samples (especially from the Indian Ocean) were necessary to test this hypothesis.

Today, cold temperate conditions that predominate around southern Africa strongly obstruct exchanges of tropical organisms between the Atlantic and Indian oceans (Vermeij & Rosenberg 1993; Briggs 1995). However, our analysis supports the hypothesis that such exchanges can occur during interglacial periods warmer than today. Our estimates for the origin of the Atlantic populations, between ~130–155 kyr BP, closely overlaps an interglacial period at 120–145 kyr BP, characterized by tropical water intrusions from the Indian Ocean to the Atlantic Ocean that were stronger than intrusions observed today (Peeters *et al.* 2004).

After breaching the barrier between the Indian and Atlantic oceans, warm Agulhas eddies either mix with the cold Benguela Current along the coast of Africa, which is probably lethal to tropical organisms, or move northwest with the warm South Equatorial Current (Gordon 2003). Thus, the western and south-central Atlantic are the most likely destinations for tropical invaders from the Indian Ocean (Fig. 1). Crossing from equatorial Africa to Brazil would take an average of 70 days based on oceanic current velocities (Scheltema 1971). Even increasing this by 50% to allow for transport time between South Africa and lower latitudes, this dispersal interval is well within the pelagic larval duration of *G. thompsoni*, up to 122 days (Sponaugle & Cowen 1994). Other Pleistocene invaders, including molluscs and sea turtles, appear to have colonized from the Indian Ocean directly to the western Atlantic (Vermeij & Rosenberg 1993; Bowen *et al.* 1994), indicating a general dispersal path for natural invasions of the tropical Atlantic.

The descending ages (based on coalescence) of population expansions in western Atlantic (~130 kyr BP), St Helena in the central Atlantic (~100 kyr BP) and eastern Atlantic (~28 kyr BP) are subject to two explanations: first, in the period

since *Gnatholepis* colonized the Atlantic, the most benign region has been the western shoreline, and *G. thompsoni* probably established its largest and most stable population in the western Atlantic. The eastern shorelines have been subject to strong temperature fluctuations caused by cold-water upwelling events, especially during glacial periods (Sachs *et al.* 2001). Consequently, eastern Atlantic populations could have been established soon after the Atlantic invasion by immigration directly from the western Atlantic, and the cline in population age and genetic diversity may reflect bottlenecks rather than colonization events.

Alternatively, the cline could indicate a pathway of intra-oceanic colonization, from the western shores to the mid-Atlantic ridge and subsequently to the eastern Atlantic. Migration in this direction would be accomplished via eastward-flowing currents, such as the Equatorial Counter-Current and the southern branch of the Brazil current. In this case, the mid-Atlantic ridge island of St Helena may have acted as a stepping stone for colonization of shallow-water fauna across the Atlantic (Muss *et al.* 2001). The presence of one individual in St Helena containing a sequence that nests within the western Atlantic lineage (green circle within blue group in Fig. 2) indicates recent west–east migration and supports the stepping-stones hypothesis. Moreover, with the lowest genetic diversity of the data set (Table 1), Ascension Island shares a most common haplotype (in 17 of its 23 individuals) with St Helena, possibly indicating a recent colonization (< 30 000 years ago according to the coalescent analyses; Table 3) from the latter. If this hypothesis is supported by other taxa, the diminutive islands of the mid-Atlantic ridge may prove to be an important aid to trans-Atlantic dispersal, and conservation initiatives aiming to protect evolutionary mechanisms should have high priority on such evolutionary crossroads (Bowen & Roman 2005).

Contemporary global warming, a phenomenon known to affect marine fish distributions (Perry *et al.* 2005), may have facilitated the most recent range expansion of *G. thompsoni*: the colonization of subtropical islands of the northeastern Atlantic. The sea around the Canary Islands began warming in the 1980s, with the highest recorded water temperatures observed in 1996–1998 (International Research Institute for Climate Prediction website <http://iri.ldeo.columbia.edu/>). Annual surveys of shore fishes in the Canary Islands (by J. V. T.) that began in 1984 recorded no *G. thompsoni* (a conspicuous, easily recognizable shallow-water species) prior to the 1996–1998 high-temperature episode. Goldspot gobies appeared during this episode and have persisted in abundance to date. Despite the recent timing of this colonization, mtDNA diversity in the Canary Islands population is similar to that elsewhere in the eastern Atlantic ($h = 0.62$ vs. $h = 0.68$ in tropical Cape Verde). This indicates that colonizers arrived in great quantities, rather than as a few stragglers. The appearance

of other tropical fish species at the Canaries during that same period (Brito *et al.* 2002 and references therein) strengthens our hypothesis that elevated sea temperatures influenced this recent range expansion in *G. thompsoni*.

Previous research indicates that the fish fauna in the tropical Atlantic has been isolated from that of the Indo-Pacific over the last 3 Myr, as would be expected in a closed ocean basin (Briggs 1995). Within the Atlantic, species distributions and recent phylogeographic studies have revealed evolutionary partitions that correspond to ecological discontinuities, particularly the Amazon barrier between tropical reef habitats in Brazil and the Caribbean Sea (Rocha *et al.* 2002; Rocha 2003, 2004), and the oceanic barrier between western, central, and eastern Atlantic (Lessios *et al.* 2001; Muss *et al.* 2001; Bernardi *et al.* 2004). Superimposed on these vicariant partitions are the episodic dispersal events (or range expansions) mediated by larval dispersal (Rocha *et al.* 2005; Lima *et al.* 2005).

In the genus *Gnatholepis*, large-scale range expansions in the late Pleistocene, including colonization of the Atlantic and subsequent spread into the NE Atlantic, are associated with global warming events. Marine and terrestrial species alike share the signatures of evolutionary processes mediated by climate change (Dynesius & Jansson 2000; Hellberg *et al.* 2001). The mtDNA data demonstrate that tropical Indian Ocean fishes can breach the Benguela barrier (which is opened intermittently by the warm Agulhas leakage) during warm interglacial periods and subsequently colonize the entire tropical Atlantic Ocean. Contemporary census data show a range expansion in *G. thompsoni* linked to elevated temperatures, consistent with the conclusions based on phylogeographic analyses. These observations of past and present trends may inform predictions about the future impacts of climate change in the marine realm.

Acknowledgements

We thank C. Ferreira, C. Thacker and P. Wirtz for samples; M. Courtney, S. Floeter, S. Grant, S. Karl, C. Moritz, D. Murie, G. Paulay, J. Roman and P. Taylor for advice and comments; and M. Steele for data on *Gnatholepis thompsoni*'s generation time. D. Greenfield, H. Larson and J. Randall provided taxonomic advice. H. Lessios critically read the manuscript. Fieldwork was facilitated by the Bermuda Biological Station for Research, the National Park Service at St. Croix, the Government of St Helena and Ascension, the Fisheries Department of Cape Verde, the Direcção das Pescas do Sao Tome, and P. C. Heemstra, South African Institute for Aquatic Biodiversity. Financial support came from the Brazilian Ministry of Education (to L. A. R.), National Science Foundation (DEB-9727048 to B. W. B.), and the Smithsonian Tropical Research Institute (to L. A. R and D. R. R.).

References

Avice JC (2000) *Phylogeography: The History and Formation of Species*. Harvard University Press, Cambridge, Massachusetts.

- Bellwood DR, Wainwright PC (2002) The history and biogeography of fishes on coral reefs. In: *Coral Reef Fishes. Dynamics and Diversity on a Complex Ecosystem* (ed. Sale PF), pp. 5–32. Academic Press, New York.
- Bermingham E, McCafferty SS, Martin AP (1997) Fish biogeography and molecular clocks: perspectives from the Panamanian Isthmus. In: *Molecular Systematics of Fishes* (eds Kocher TD, Stepien CA), pp. 113–128. Academic Press, New York.
- Bernardi G, Bucciarelli G, Costagliola D, Robertson DR, Heiser JB (2004) Evolution of coral reef fish *Thalassoma* spp. (Labridae). 1. Molecular phylogeny and biogeography. *Marine Biology*, **144**, 369–375.
- Bowen BW, Roman J (2005) Gaia's handmaidens: the Orlog model for conservation. *Conservation Biology*, **19**, 1037–1043.
- Bowen BW, Kamezaki N, Limpus CJ *et al.* (1994) Global phylogeography of the loggerhead turtle (*Caretta caretta*) as indicated by mitochondrial DNA haplotypes. *Evolution*, **48**, 1820–1828.
- Bowen BW, Bass AL, Rocha LA, Grant WS, Robertson DR (2001) Phylogeography of the trumpetfish (*Aulostomus* spp.): ring species complex on a global scale. *Evolution*, **55**, 1029–1039.
- Briggs JC (1995) *Global Biogeography*. Elsevier, New York.
- Brito A, Pascual PJ, Falcon JM, Sancho A, Gonzalez G (2002) *Peces de las Islas Canarias*. Francisco Lemus Editor, S.L., Tenerife.
- Clement M, Posada D, Crandall KA (2000) tcs: a computer program to estimate gene genealogies. *Molecular Ecology*, **9**, 1657–1659.
- Craig MT, Hastings PA, Pondella IIDJ (2004) Speciation in the Central American Seaway: the importance of taxon sampling in the identification of trans-isthmian geminate pairs. *Journal of Biogeography*, **31**, 1085–1091.
- Duque-Caro H (1990) Neogene stratigraphy, paleoceanography and paleobiology in northwest South America and the evolution of the Panama Seaway. *Palaeogeography, Palaeoclimatology, Palaeoecology*, **77**, 203–234.
- Dynesius M, Jansson R (2000) Evolutionary consequences of changes in species' geographical distributions driven by Milankovitch climate oscillations. *Proceedings of the National Academy of Sciences, USA*, **97**, 9115–9120.
- Fu Y-X (1997) Statistical tests of neutrality of mutations against population growth, hitchhiking and background selection. *Genetics*, **147**, 915–925.
- Gordon AL (2003) The brawnier retroflection. *Science*, **421**, 904–905.
- Harpending HC, Sherry ST, Rogers AR, Stoneking M (1993) The genetic structure of ancient human populations. *Current Anthropology*, **34**, 483–496.
- Hellberg ME, Balch DP, Roy K (2001) Climate-driven range expansion and morphological evolution in a marine gastropod. *Science*, **292**, 1707–1710.
- Knowlton N, Weigt LA (1998) New dates and new rates for divergence across the Isthmus of Panama. *Proceedings of the Royal Society of London. Series B, Biological Sciences*, **265**, 2257–2263.
- Kuhner MK, Yamato J, Felsenstein J (1998) Maximum likelihood estimation of population growth rates based on the coalescent. *Genetics*, **149**, 429–434.
- Lessios HA, Kessing BD, Pearse JS (2001) Population structure and speciation in tropical seas: global phylogeography of the sea urchin *Diadema*. *Evolution*, **55**, 955–975.
- Lima D, Freitas JEP, Araujo ME, Sole-Cava AM (2005) Genetic detection of cryptic species in the frillfin goby *Bathygobius soporator*. *Journal of Experimental Marine Biology and Ecology*, **320**, 211–223.
- Meyer A (1993) Evolution of mitochondrial DNA in fishes. In: *Biochemistry and Molecular Biology of Fishes* (eds Hochanchka PW, Mommsen TP), pp. 1–38. Elsevier, New York.
- Muss A, Robertson DR, Stepien CA, Wirtz P, Bowen BW (2001) Phylogeography of *Ophioblennius*: the role of ocean currents and geography in reef fish evolution. *Evolution*, **55**, 561–572.
- Peeters FJC, Acheson R, Brummer GJA *et al.* (2004) Vigorous exchange between the Indian and Atlantic oceans at the end of the past five glacial periods. *Nature*, **430**, 661–665.
- Perry AL, Low PJ, Ellis JR, Reynolds JD (2005) Climate change and distribution shifts in marine fishes. *Science*, **308**, 1912–1925.
- Posada D, Crandall KA (1998) MODELTEST: testing the model of DNA substitution. *Bioinformatics*, **14**, 817–818.
- Randall JE, Greenfield DW (2001) A preliminary review of the Indo-Pacific gobiid fishes of the genus *Gnatholepis*. *Ichthyological Bulletin of the J. L. B. Smith Institute of Ichthyology*, **69**, 1–17.
- Robertson DR, Allen GR (2002) *Shorefishes of the Tropical Eastern Pacific: An Information System*. Smithsonian Tropical Research Institute, Balboa, Panama. [CD-ROM]
- Rocha LA (2003) Patterns of distribution and processes of speciation in Brazilian reef fishes. *Journal of Biogeography*, **30**, 1161–1171.
- Rocha LA (2004) Mitochondrial DNA and color pattern variation in three western Atlantic *Halichoeres* (Labridae), with the revalidation of two species. *Copeia*, **2004**, 770–782.
- Rocha LA, Bass AL, Robertson DR, Bowen BW (2002) Adult habitat preferences, larval dispersal, and the comparative phylogeography of three Atlantic surgeonfishes (Teleostei: Acanthuridae). *Molecular Ecology*, **11**, 243–252.
- Rocha LA, Robertson DR, Roman J, Bowen BW (2005) Ecological speciation in tropical reef fishes. *Proceedings of the Royal Society of London. Series B, Biological Sciences*, **272**, 573–579.
- Rozas J, Sanchez-Delbarrio JC, Messegyer X, Rozas R (2003) DNASP, DNA polymorphism analyses by the coalescent and other methods. *Bioinformatics*, **19**, 2496–2497.
- Sachs JP, Anderson RF, Lehman SJ (2001) Glacial surface temperatures of the southeast Atlantic Ocean. *Science*, **293**, 2077–2079.
- Scheltema RS (1971) The dispersal of the larvae of shoal-water benthic invertebrate species over long distances by ocean currents. In: *Fourth European Marine Biology Symposium* (ed. Crisp PJ), pp. 7–28. Cambridge University Press, Cambridge, UK.
- Schneider S, Roessli D, Excoffier L (2000) ARLEQUIN, version 2.0: A software for population genetics data analysis. Genetics and Biometry Laboratory, University of Geneva, Switzerland.
- Shannon LV (1985) The Benguela ecosystem. Part I. Evolution of the Benguela physical features and processes. *Oceanography and Marine Biology Annual Reviews*, **23**, 105–182.
- Smith AG, Smith DG, Funnell BM (1995) *Atlas of Mesozoic and Cenozoic Coastlines*. Cambridge University Press, New York.
- Sponaugle S, Cowen RK (1994) Larval durations and recruitment patterns of two Caribbean gobies (Gobiidae): contrasting early life histories in demersal spawners. *Marine Biology*, **120**, 133–143.
- Tamura K, Nei M (1993) Estimating the number of nucleotide substitutions in the control region of mitochondrial DNA in humans and chimpanzees. *Molecular Biology and Evolution*, **15**, 512–526.

- Thacker CE (2003) Molecular phylogeny of the gobioid fishes (Teleostei: Perciformes: Gobioidi). *Molecular Phylogenetics and Evolution*, **26**, 354–368.
- Thacker CE (2004a) Phylogeny and species boundaries in the gobiid genus *Gnatholepis* (Teleostei: Perciformes). *Zoological Journal of the Linnean Society*, **142**, 573–582.
- Thacker CE (2004b) Population structure in two species of the reef goby *Gnatholepis* (Teleostei: Perciformes) among four South Pacific island groups. *Coral Reefs*, **23**, 357–366.
- Vermeij GJ (1991) When biotas meet: understanding biotic interchange. *Science*, **253**, 1099–1104.
- Vermeij GJ, Rosenberg G (1993) Giving and receiving: the tropical Atlantic as donor and recipient region for invading species. *American Malacological Bulletin*, **10**, 181–194.

Luiz A. Rocha's research interests include speciation, co-evolution, population genetics and molecular phylogenetics of coral reef fishes. D. Ross Robertson has broad research interests in the pantropical biogeography of reef fishes, and the demography, reproductive biology and ecology of neotropical shore fishes. Claudia Rocha has broad interests in the phylogeography and conservation genetics of marine organisms. James Van Tassel works on the systematics of gobioids from the Americas with emphasis on the Tribe Gobiosomatini (American Seven-spined gobies). Matthew T. Craig is a postdoctoral researcher at the Hawaii Institute of Marine Biology; his research interests include speciation, phylogeography, and systematics of marine shore fishes. Brian Bowen works on the phylogeography and conservation genetics of marine vertebrates.
