

# **ADULT COMMUNITY CENTERS: THE BEST FIT**



**Gainesville, FL**

**Shannon Crowder**

**Jesse Martin**

**LOCATION OF CENTER FOR  
TARGET GROUP:  
AGES 50 AND UP**

**PHYSICAL SUITABILITY**

**HOSPITALS  
PHARMACIES  
BUS ROUTES  
ASSISTED LIVING HOMES**

**POST OFFICES  
FIRE DEPARTMENTS  
SCHOOLS  
GROCERY STORES**

**DETERMINE LOCATION  
OF WETLANDS AND LAKES**

**WITHIN ONE MILE  
OF CENTERS**

**WITHIN TWO MILES  
OF CENTERS**

# **TARGET GROUP: AGES 50 AND UP**

- **Minimum population density of 100 citizens ages 64 and up.**
- **Minimum population density of 150 citizens ages 50 and up.**
- **Longevity of centers**
- **Alachua County population has increased 30% in the past ten years.**

# PHYSICAL SUITABILITY

- **65% OF ALACHUA COUNTY IS CONSIDERED WETLANDS**
- **LAKES**
- **CONSERVATION AREAS (EX: HAWTHORNE TRIAL, PAYNES PRARIE)**



# **KEY FACILITIES**

- **POST OFFICES**
- **GROCERY STORES**
- **MASS TRANSIT ROUTES**
- **ASSISTED LIVING HOMES**
- **CENTERS ARE REQUIRED TO BE WITHIN A ONE MILE PROXIMITY OF THESE FACILITIES**

# **ADDITIONAL SERVICES**

- **HOSPITALS**
- **FIRE DEPARTMENTS**
- **PHARMACIES**
- **SCHOOLS/COLLEGES**
- **CENTERS ARE REQUIRED TO BE WITHIN THREE MILES OF THESE AMENITIES**

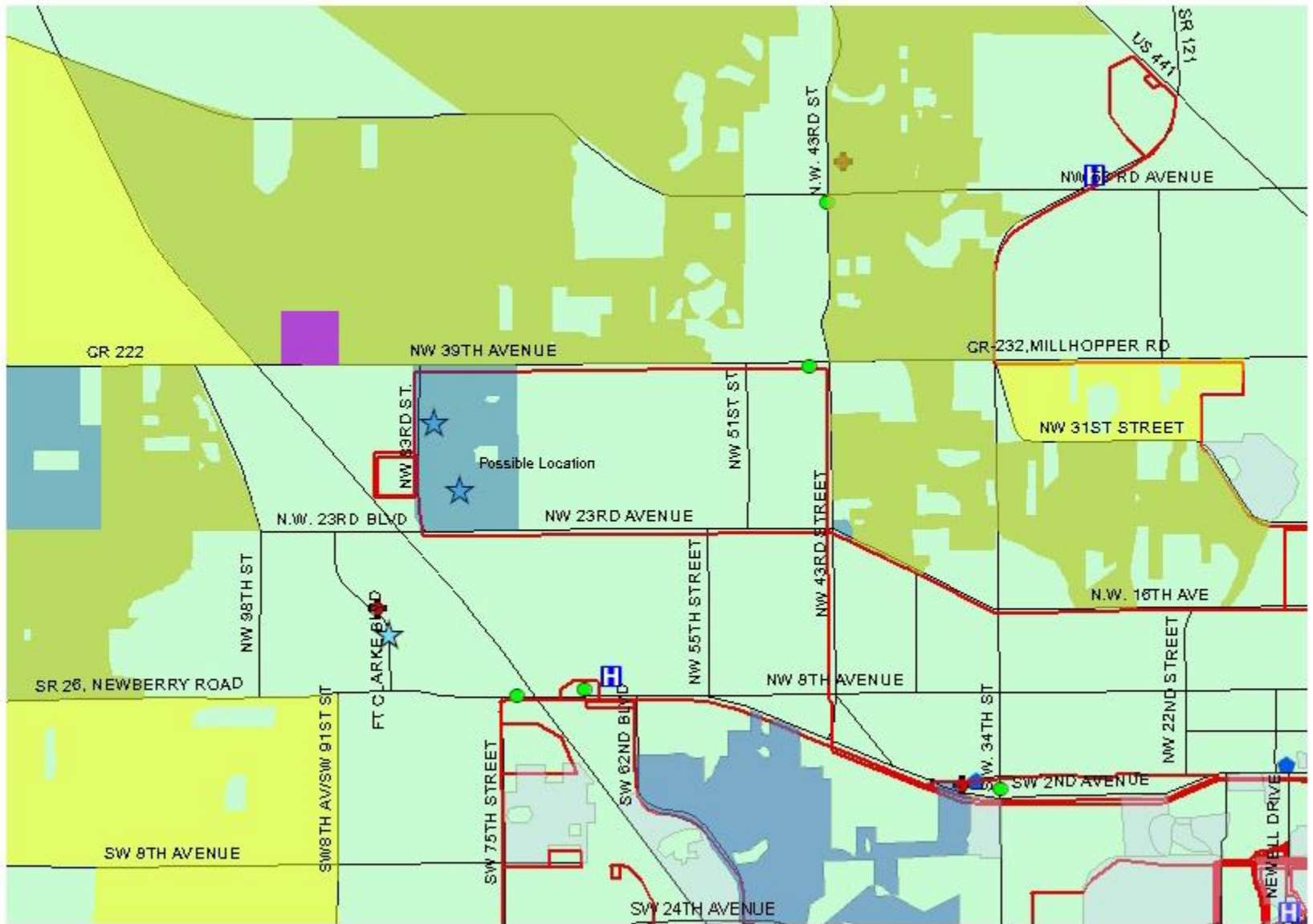


# NW 92nd Ct. and NW 39th Ave

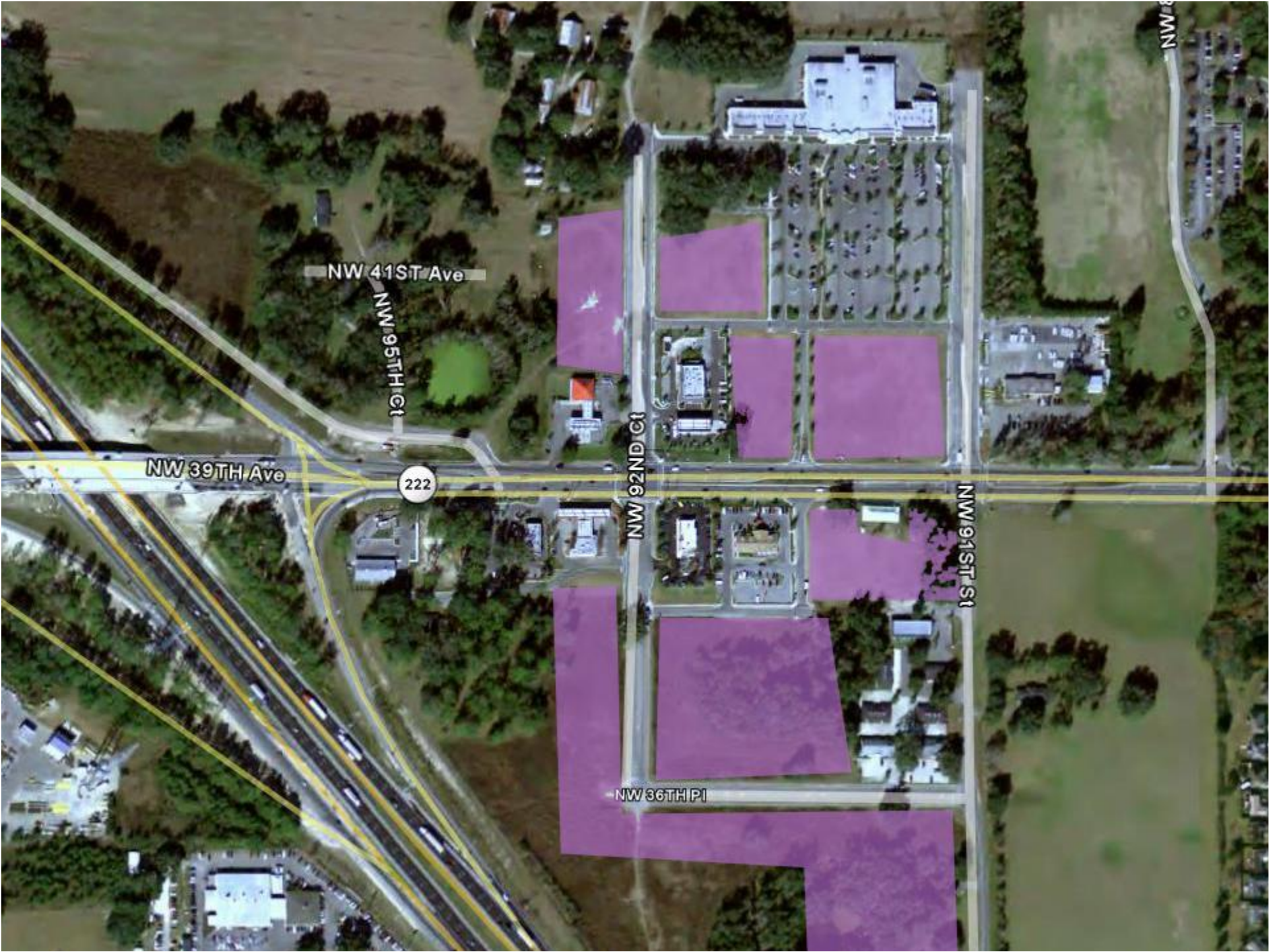


## Legend

- 50-64 > 150
- 65+ > 100
- Students
- Hospitals
- Pharmacies
- Bus Route
- Assisted Living
- Post Office
- Fire Department
- Major Roads
- Alachua County Boundaries
- Possible Location

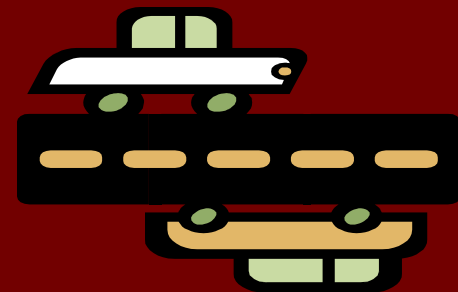






# **NW 92<sup>ND</sup> COURT & NW 39<sup>TH</sup> AVENUE**

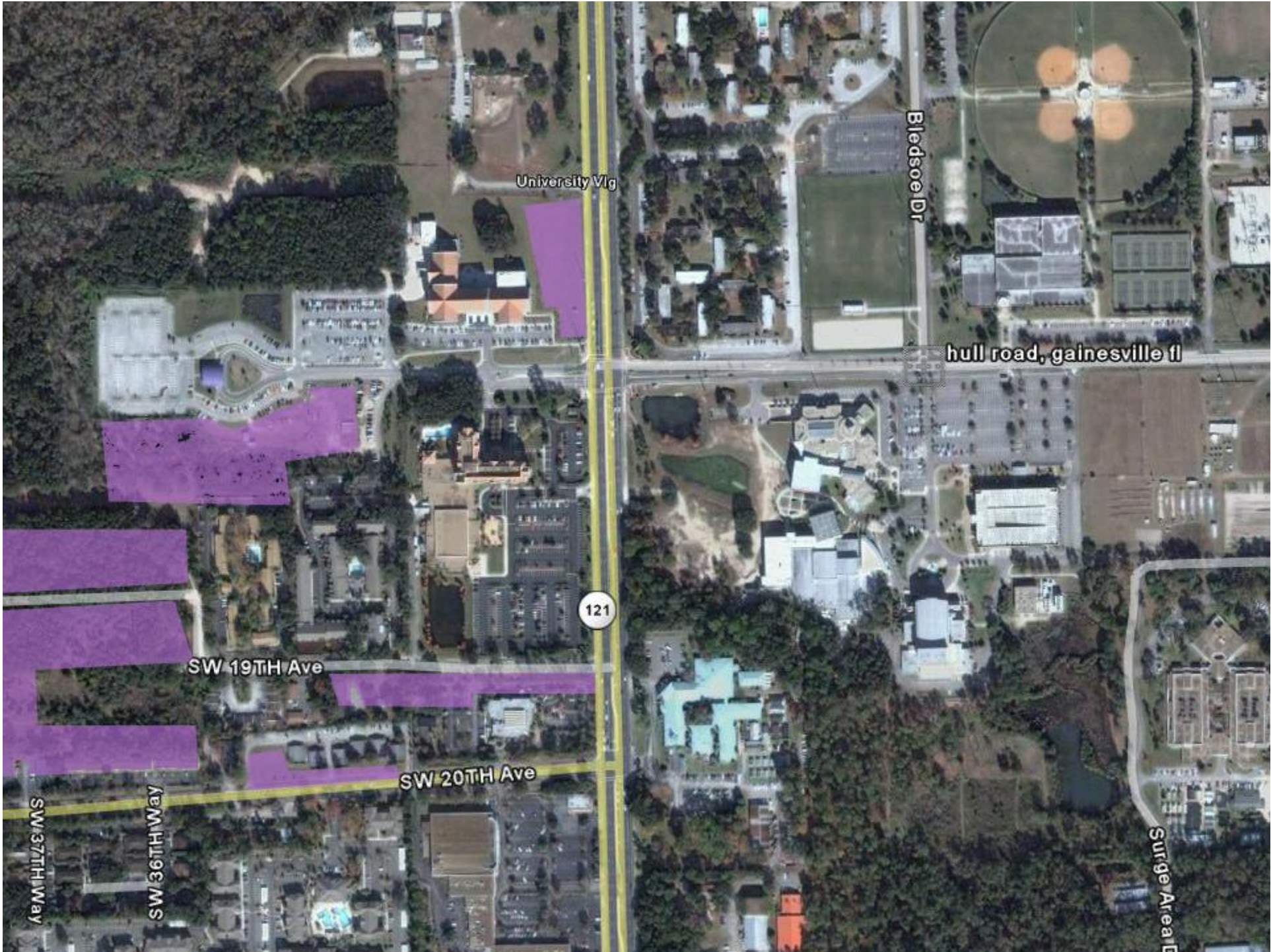
- **HIGH DENSITY OF TARGET GROUP**
- **CLOSE TO SANTA FE COMMUNITY COLLEGE**
- **CLOSE TO INTERSTATE 75**
- **GROCERY STORE WITHIN WALKING DISTANCE**
- **MOST SERVICES LOCATED ON NW 39<sup>TH</sup> AVENUE**
- **ACCESSIBLE TO BUS ROUTES**



# Hull Rd. and SW34th St.



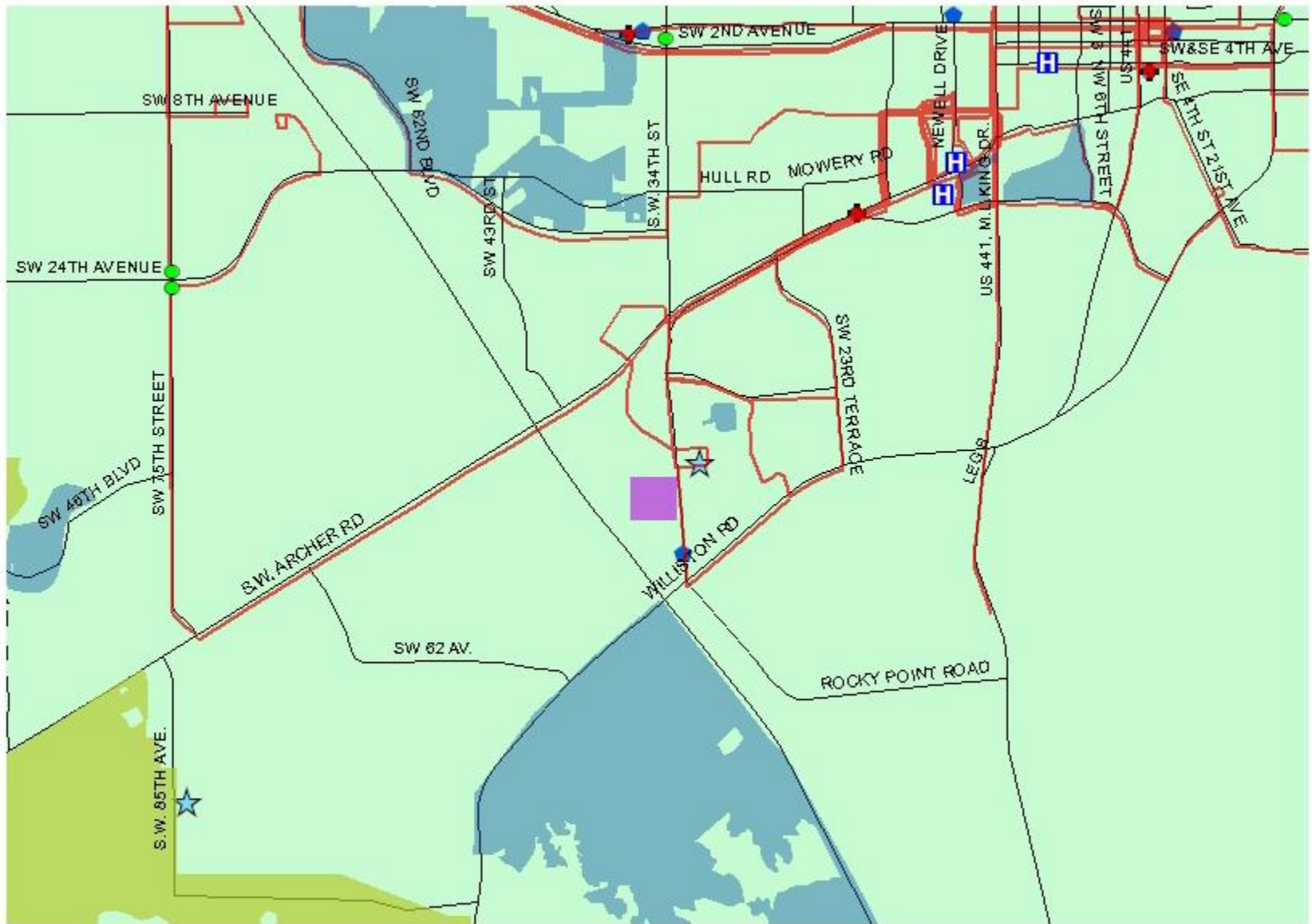
- Legend**
- 50-64 > 150
  - 65+ > 100
  - Students
  - Hospitals
  - Pharmacies
  - Bus Route
  - Assisted Living
  - Post Office
  - Fire Department
  - Major Roads
  - Possible Location



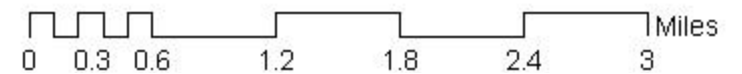
# **HULL ROAD AND SW 34<sup>TH</sup> ROAD**

- **HIGH DENSITY OF AGES 65 AND UP**
- **ACROSS THE STREET FROM UF**
- **QUIET, WOODED AREA**
- **ORTHOPEDIC INSTITUTE LOCATED ON HULL ROAD**
- **WITHIN HALF A MILE OF THE CENTER OF PERFORMING ARTS**
- **GROCERY STORE WITHIN  $\frac{3}{4}$  QUARTERS OF A MILE**

# SW 47th Ave



- Legend**
- 60-64 > 150
  - 65+ > 100
  - Hospitals
  - Pharmacies
  - Bus Route
  - Assisted Living
  - Post Office
  - Fire Department
  - Major Roads
  - Possible Location





# **SW 47<sup>TH</sup> AVENUE & SW 34<sup>TH</sup> AVENUE**

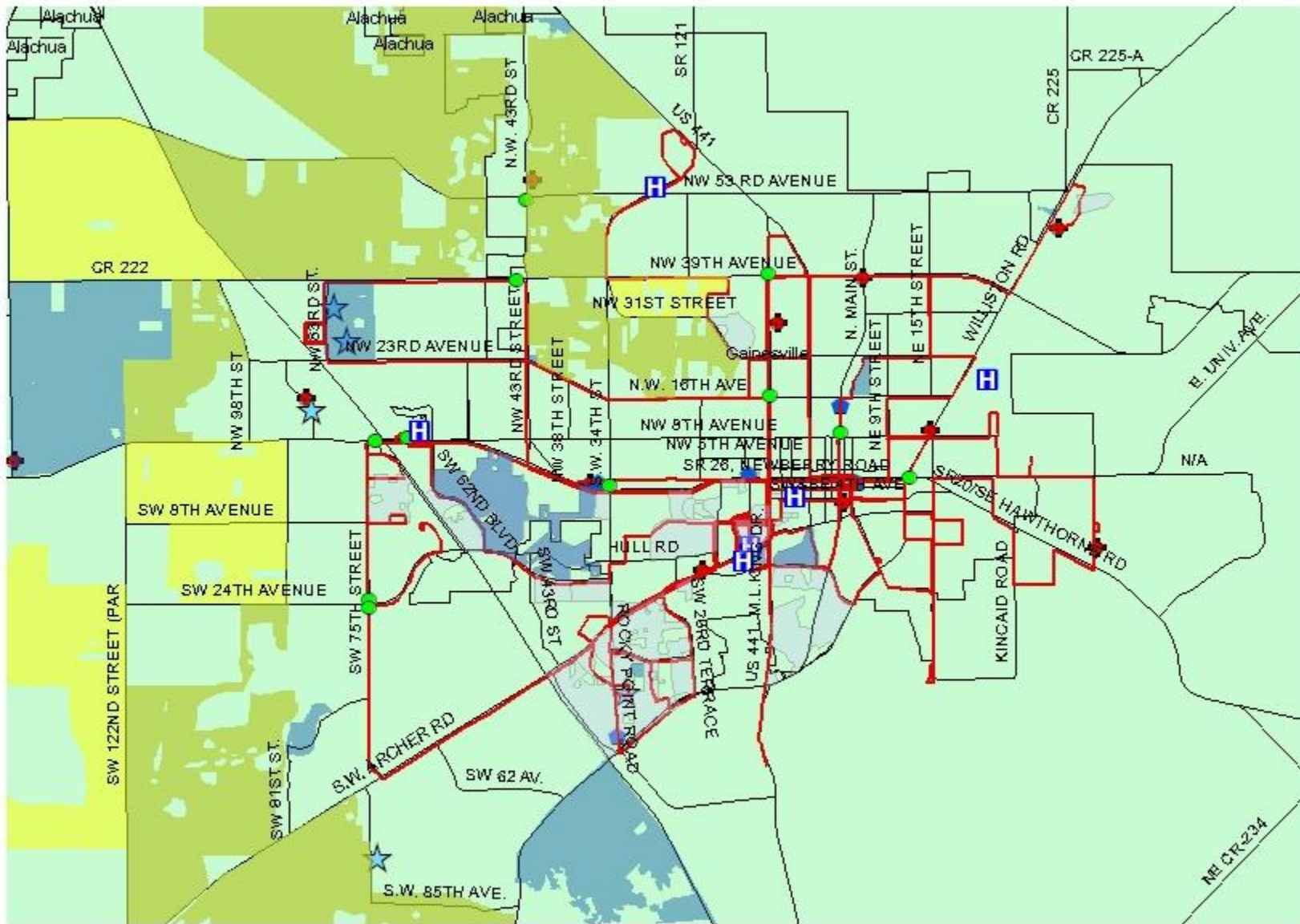
- **HIGH DENSITY OF TARGET POPULATION, AGES 50 AND UP**
- **LOCATED A QUARTER MILE FROM GROCERY STORE**
- **LOCATED TWO BLOCKS FROM LARGEST POST OFFICE IN ALACHUA COUNTY**
- **LOCATED A HALF MILE AWAY FROM I-75**
- **OFFERS ACCESSIBILITY TO MORE RURAL CONCENTRATIONS OF TARGETED GROUP**





**Legend**

-  50-64-150
-  65+100
-  Students
-  Hospitals
-  Pharmacies
-  Bus Route
-  Assisted Living
-  Post Office
-  Fire Department
-  Major Roads
-  Alachua County Boundaries



**LOCATION OF CENTER FOR  
TARGET GROUP:  
AGES 50 AND UP**

**PHYSICAL SUITABILITY**

**HOSPITALS  
PHARMACIES  
BUS ROUTES  
ASSISTED LIVING HOMES**

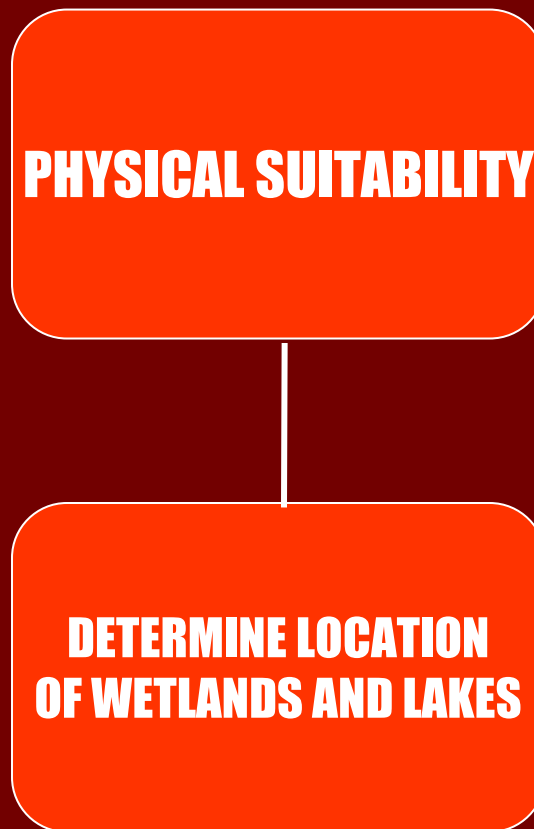
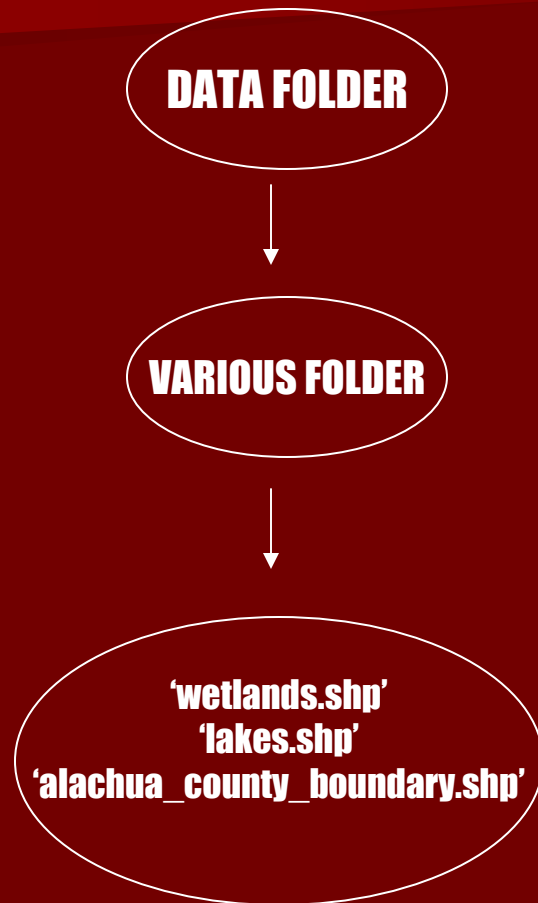
**POST OFFICES  
FIRE DEPARTMENTS  
SCHOOLS  
GROCERY STORES**

**DETERMINE LOCATION  
OF WETLANDS AND LAKES**

**WITHIN ONE MILE  
OF CENTERS**

**WITHIN TWO MILES  
OF CENTERS**

# ARCGIS TOOLS



# ARCGIS TOOLS

**DATA FOLDER**



**VARIOUS FOLDER**



**'hospitals.shp'**  
**'ala\_empl\_infoUSA.shp'**  
**'transit\_routes.shp'**  
**'group\_homes.shp'**  
**'majrds.shp'**  
**'alachua\_county\_boundary.shp'**

**HOSPITALS**  
**PHARMACIES**  
**BUS ROUTES**  
**ASSISTED LIVING HOMES**



**WITHIN ONE MILE**  
**OF CENTERS**

# ARCGIS TOOLS

**DATA FOLDER**



**VARIOUS FOLDER**



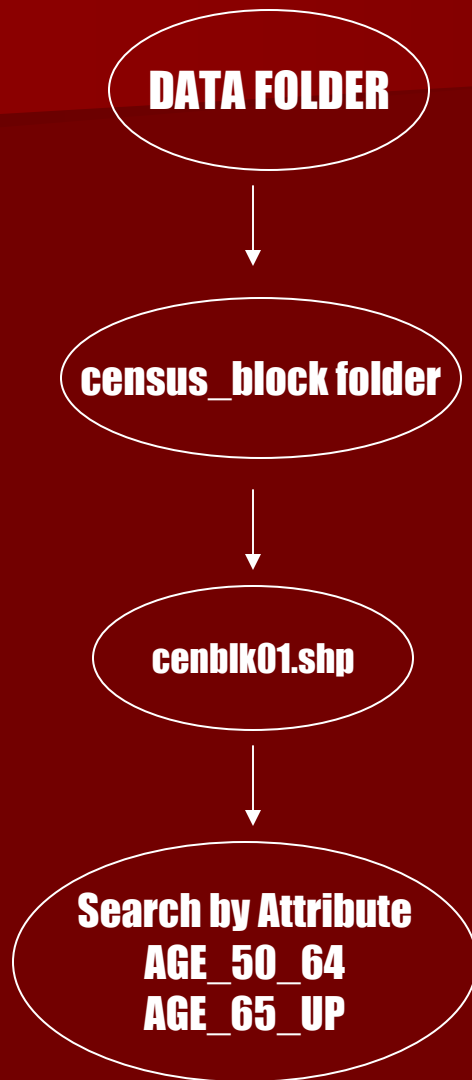
**'ala\_empl\_infoUSA.shp'**  
**'fire\_dept.shp'**  
**'majrds.shp'**  
**'alachua\_county\_boundary.shp'**

**POST OFFICES**  
**FIRE DEPARTMENTS**  
**SCHOOLS**  
**GROCERY STORES**



**WITHIN TWO MILES**  
**OF CENTERS**

# ARCGIS TOOLS



**LOCATION OF CENTER FOR  
TARGET GROUP:  
AGES 50 AND UP**



**Legend**

-  50-64-150
-  65+100
-  Students
-  Hospitals
-  Pharmacies
-  Bus Route
-  Assisted Living
-  Post Office
-  Fire Department
-  Major Roads
-  Possible Locations

