

DISPLAYING GIS DATA WITH ARCGIS

topics of the week

- ❑ **The ArcMap interface**
- ❑ **Layers**
- ❑ **Maps**
- ❑ **Layer symbology**
- ❑ **Displaying, classifying layers**
 - ❑ **Qualitative values**
 - ❑ **Quantitative values**

The ArcMap interface

Title Bar
Menu Bar
Button Bar

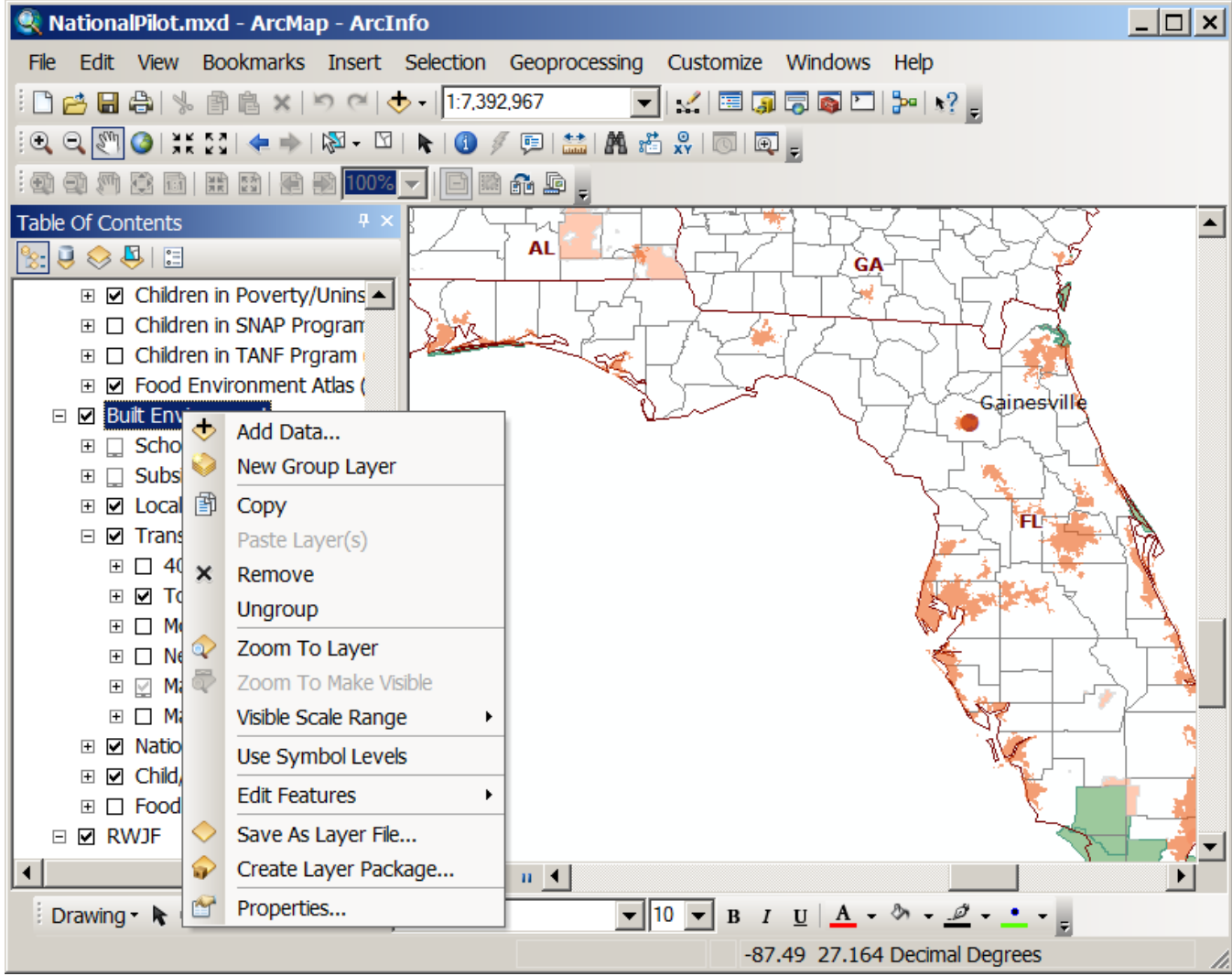


Table of Content

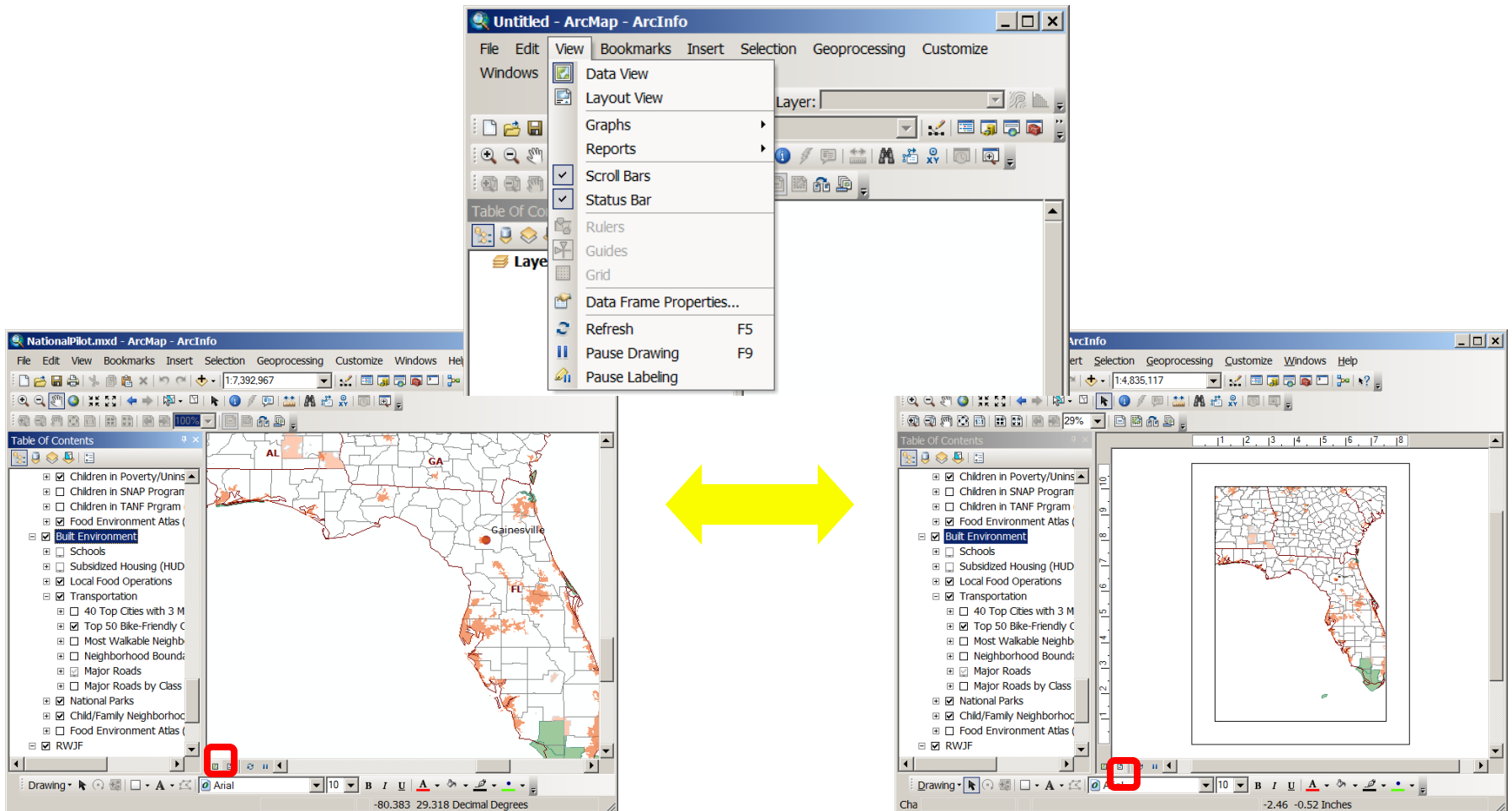
Drawing Toolbar
Status Bar

Context Menu

Dockable Tool Bar

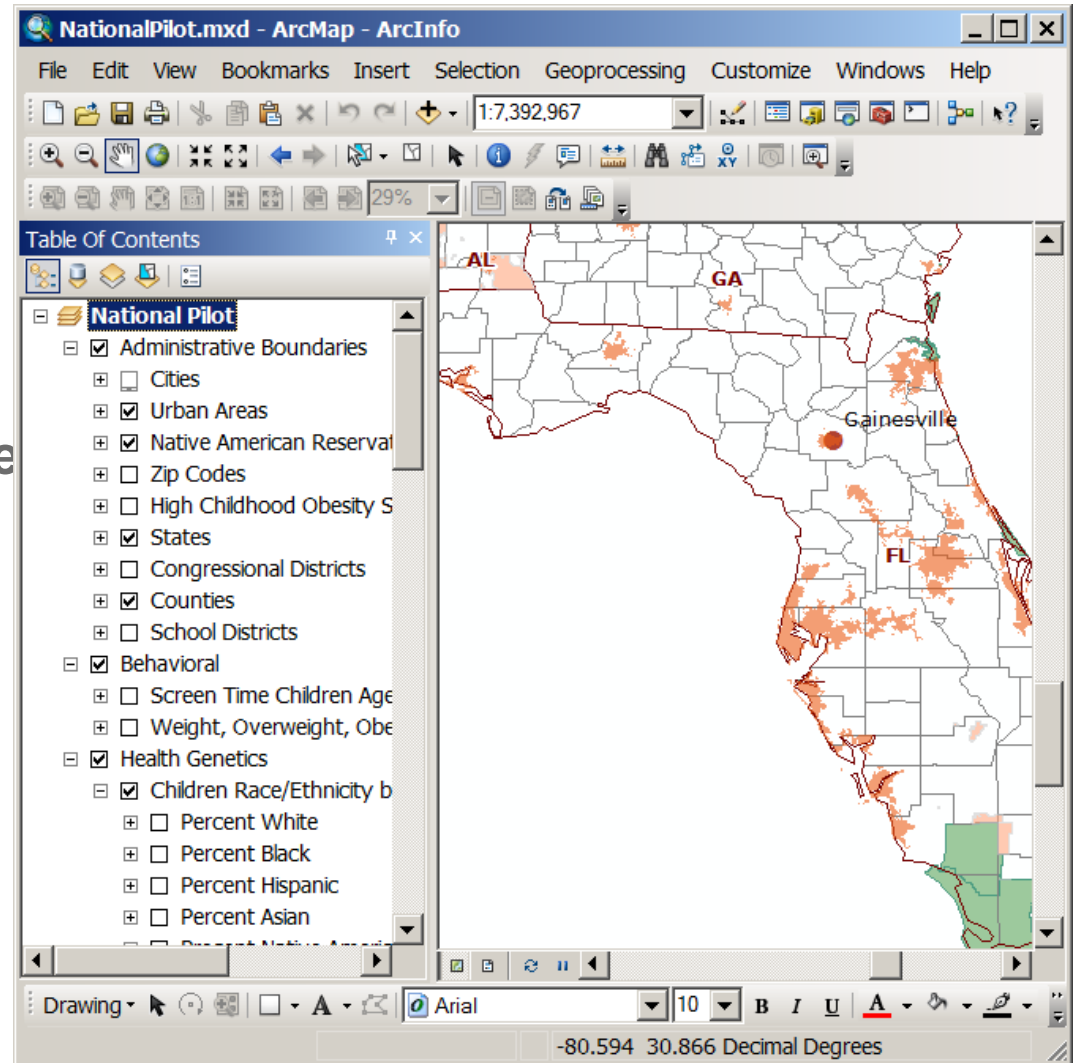
Data View vs. Layout View

- Use *data view* for display, queries, editing and analysis
- Use *layout view* for creating map layouts



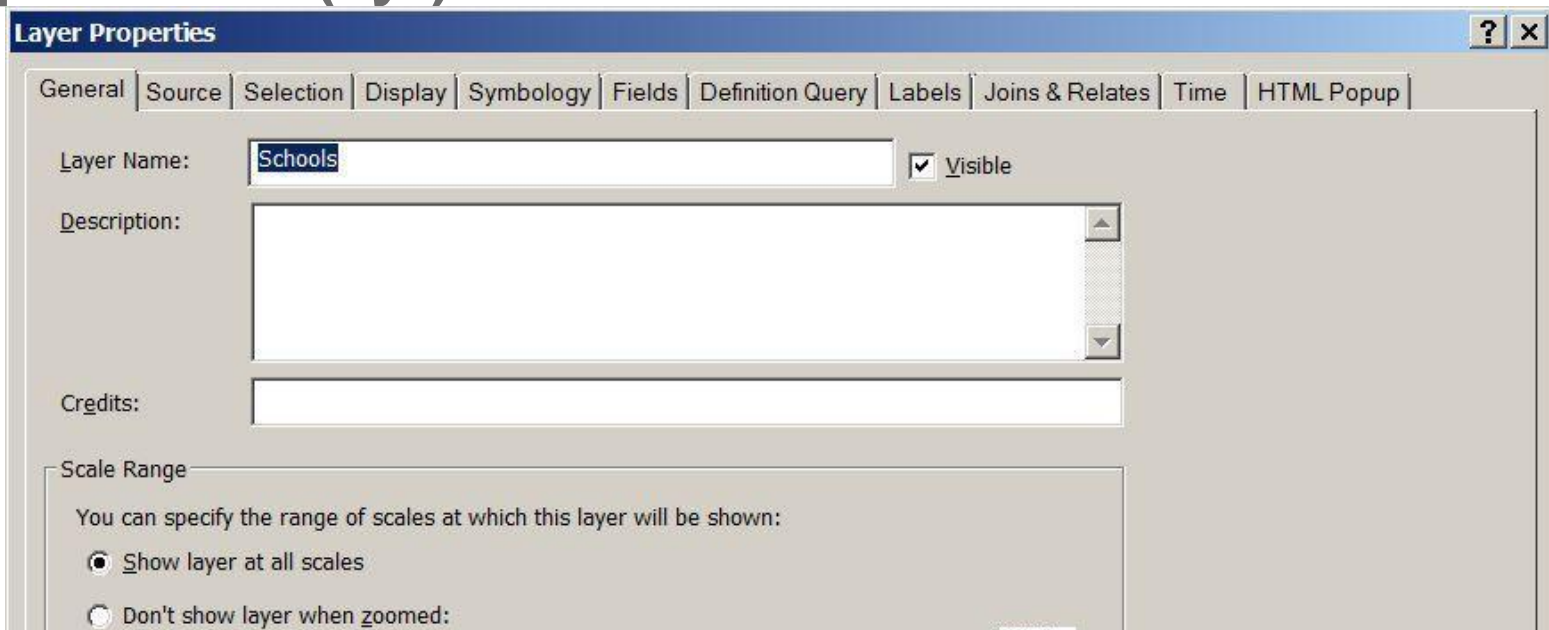
Layers, data frames, and maps

- **Data Frame**
 - Container for layers
- **Layer**
 - Symbolizes data source
 - Stores path to data source
- **Map**
 - Contains data frames
 - Layers
 - Map elements



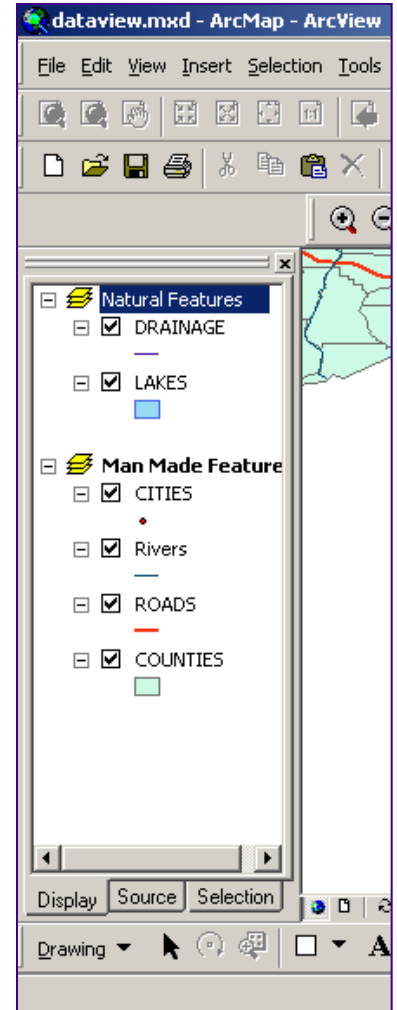
Layers

- ❑ Reference spatial data sources
- ❑ Set symbols, labels and other properties
- ❑ Manipulated through the context menu
- ❑ Store paths to data source
- ❑ Stored inside ArcGIS project (.mxd) or outside as a separate file (.lyr)



Data frames

- ❑ Data frames are containers for layers
- ❑ TOC can have many data frames
 - ❑ Index and inset maps
 - ❑ Arrange in layout view
- ❑ Add data frames from *Insert* menu
- ❑ Only one data frame active at a time
- ❑ Activate data frames from context menu



Group layers

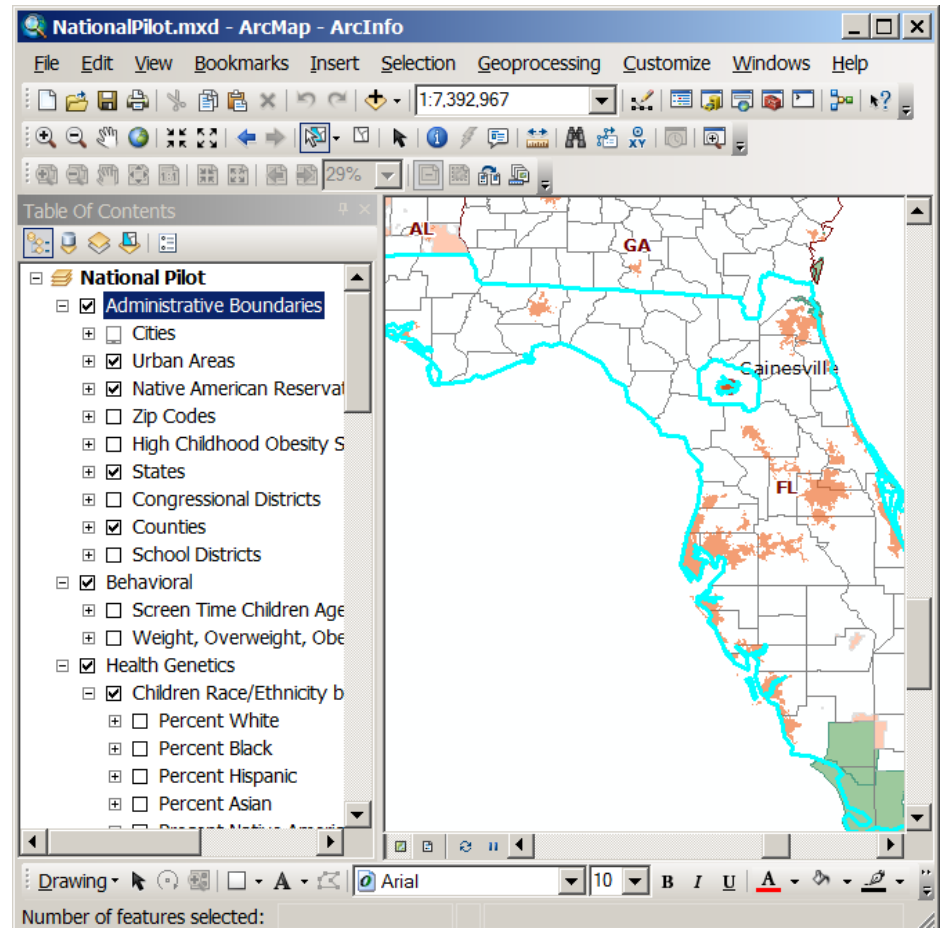
- ❑ A *group layer* is composed of many layers that act as one
- ❑ Properties of a *group layer* override properties of its constituent layers
- ❑ One can still work with individual layers in the *group layer*
- ❑ One can save a *group layer* as a layer file [**.lyr*]
- ❑ One data frame can have many *group layers*
- ❑ Right click on Data Frame to add a new *group layer*
- ❑ *OR*, Select several layers in the TOC, right click, then *Group*
- ❑ *OR*, a *group layer* can also be created in ArcCatalog

Layer files

- **Save data interpretation for future re-use in other maps**
 - **.lyr extension**
 - **save the symbology for a layer without saving an entire map document**
 - **can load into another map document in ArcMap (.mxd)**
 - **can preview in ArcCatalog**
 - **can not read from outside of ArcGIS**
 - **works with both vector and raster formats**

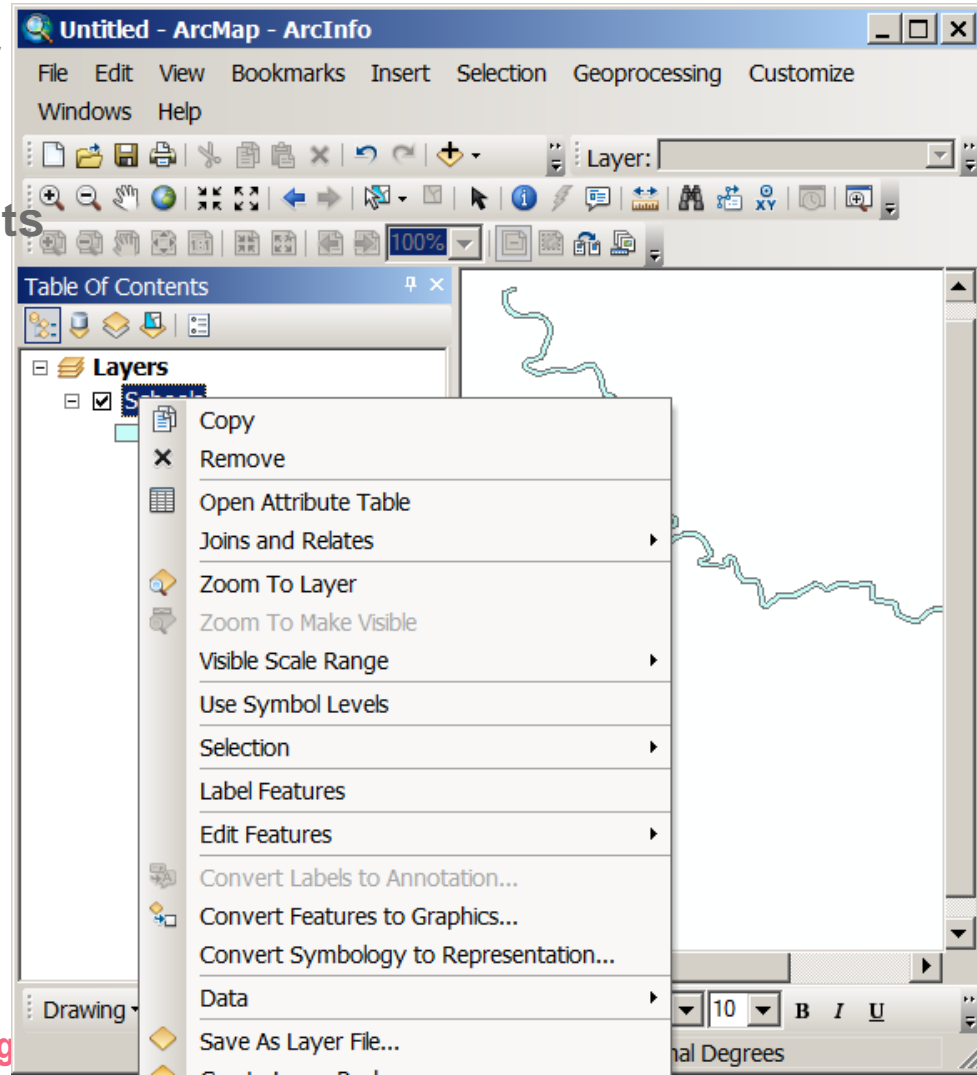
Maps

- Holds layers, data frames, graphics, map elements
- Store information in a map document (.mxd) file



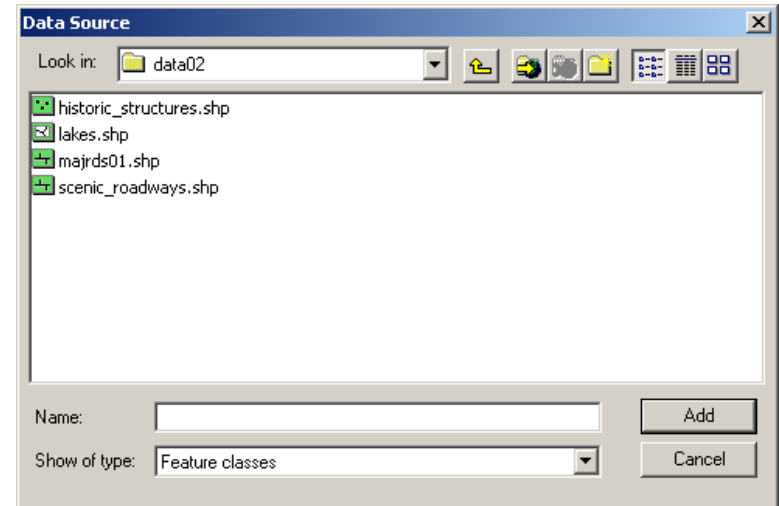
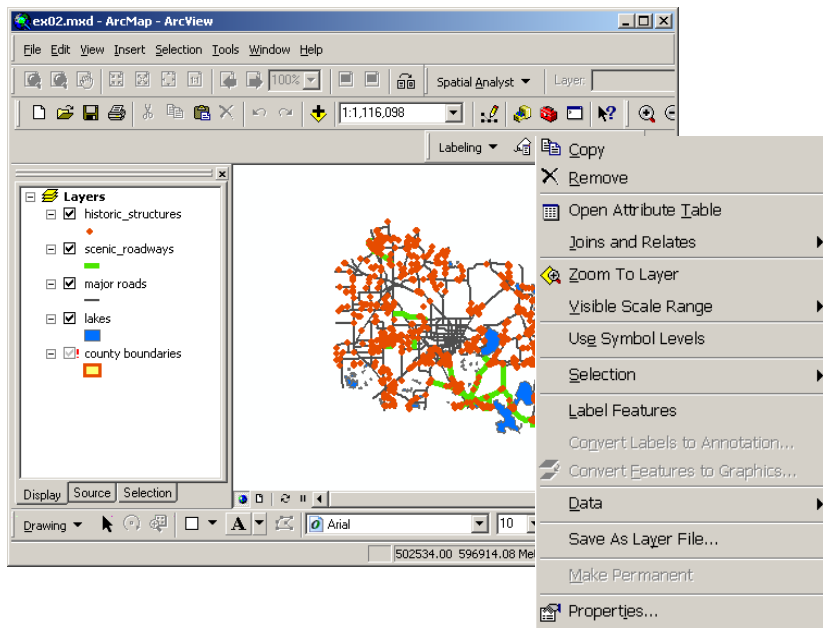
Working with the Table of Contents

- Drag layers up or down to change display order
 - Smart defaults for layer draw order
 - Point, lines on polygons
 - Layers draw in the Table of Contents order, from the bottom-up
- Rename data frames and layers
- Remove layers
- Display, Source, Selection tabs



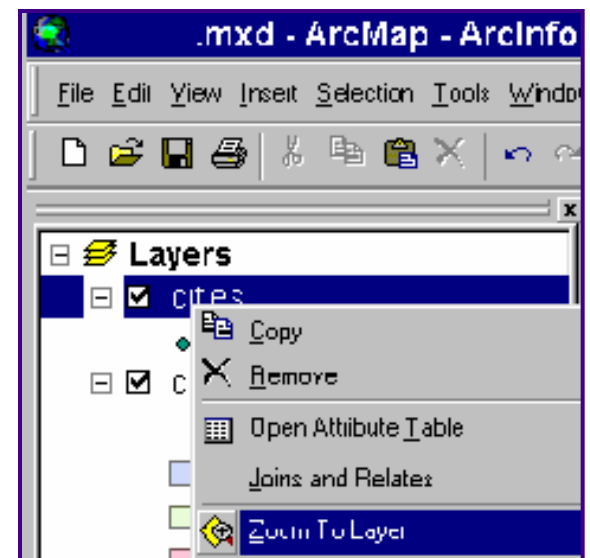
Source vs. Display Tabs: re-setting the source

- ❑ The table of content keeps track of the path to the source data
- ❑ The table of content displays the name of the layer
- ❑ The table of content warns when source data moves
- ❑ To re-set the data source for a layer:
Highlight, Right-click the layer > Data > Repair Data Source



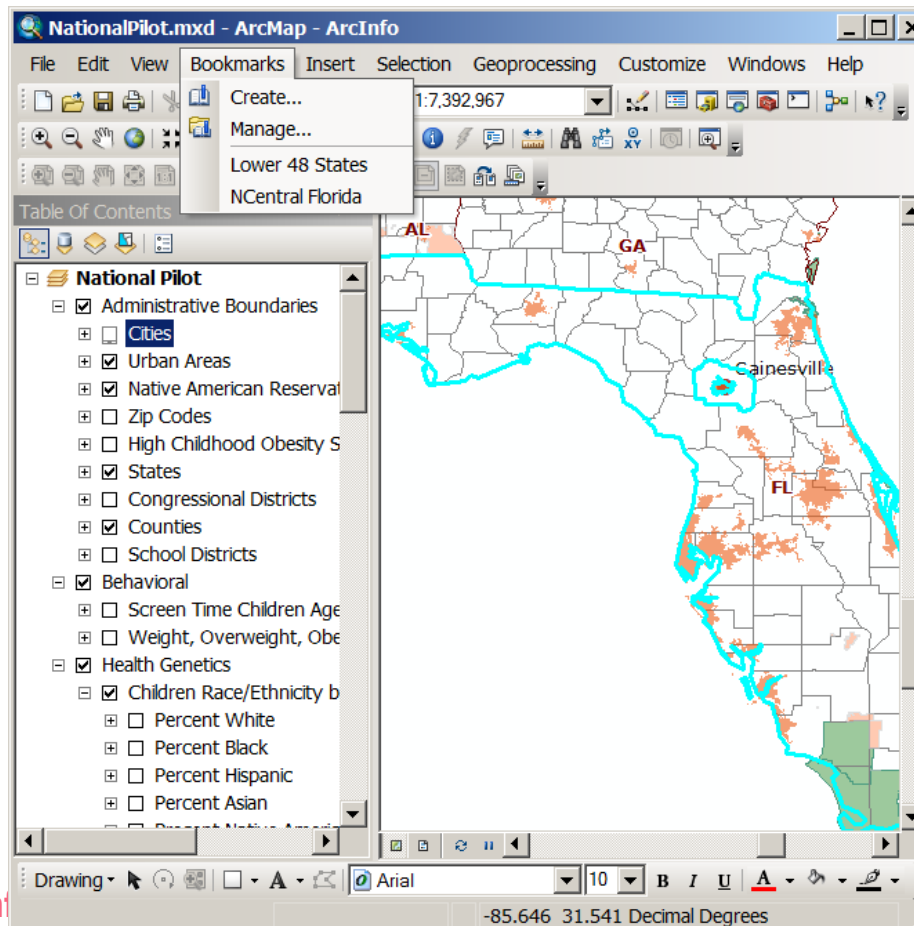
Navigating the map

- Zooming in and out
- Panning around the map
- Zooming to full extent of single or multiple layers
- Back or forward to last zoom in display
- Zoom to specific layer's extent



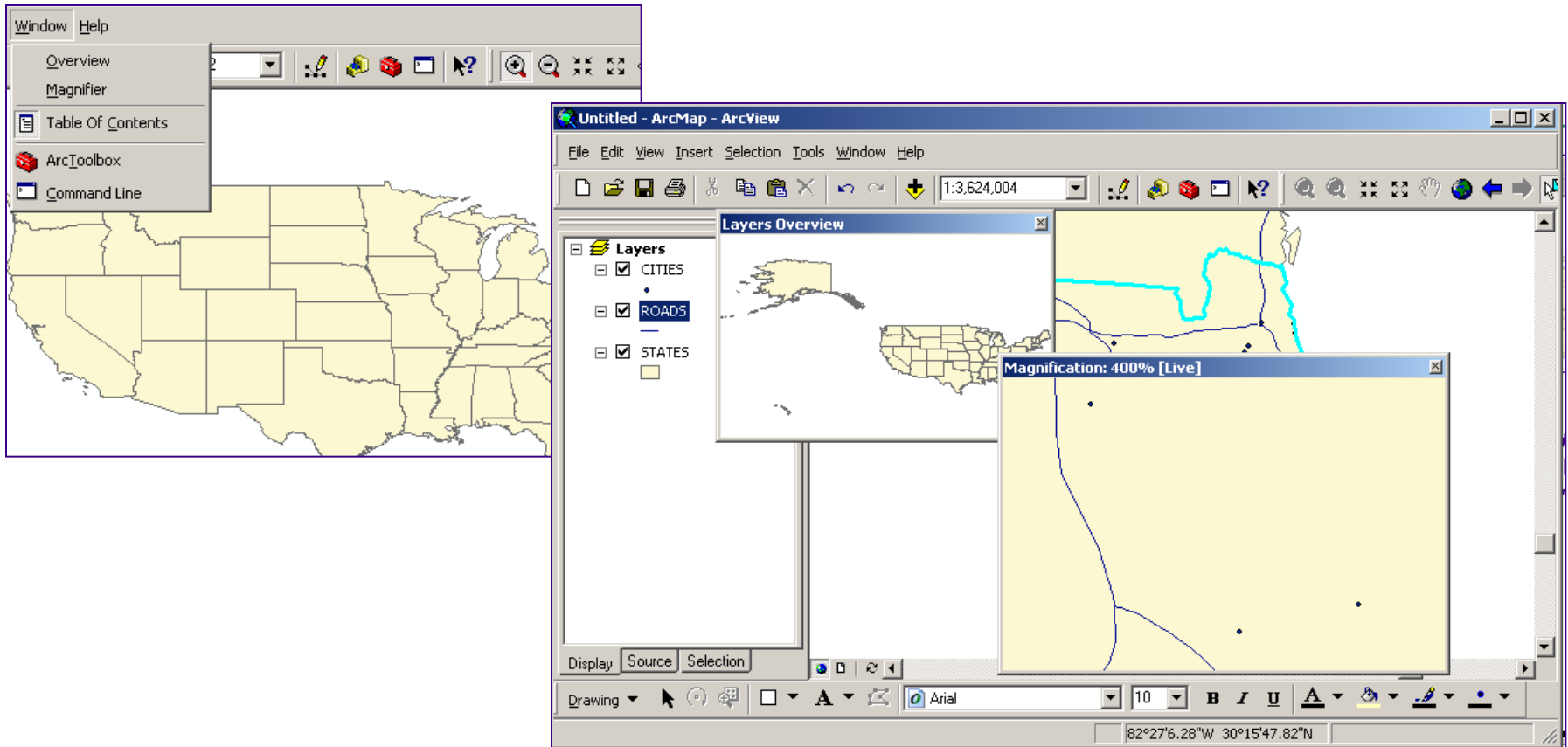
The Bookmark

- Spatial bookmarks
 - Set a location extent and name it
 - Store it, so that you can return to it at any time



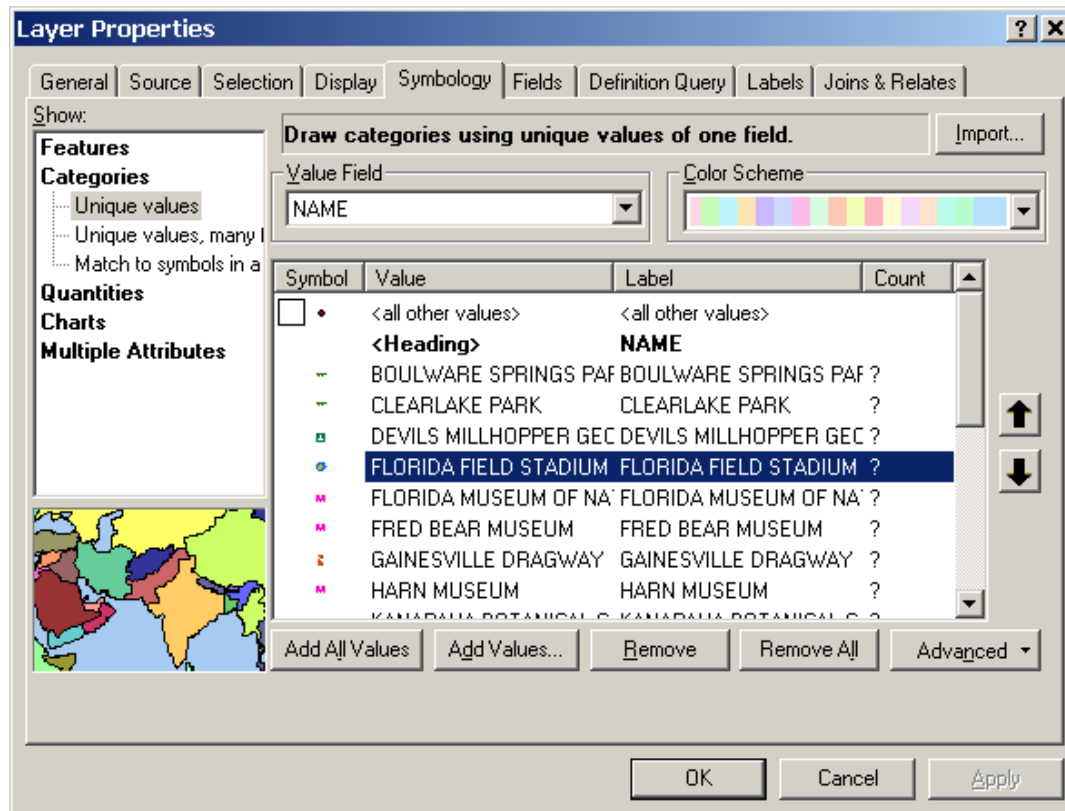
Overview and Magnifier

- Explore detail or overview without changing display



Symbology for layers in ArcMap

- ❑ Single symbol for all features
- ❑ Various classified symbols based on attribute values



Displaying qualitative values

Features

Features

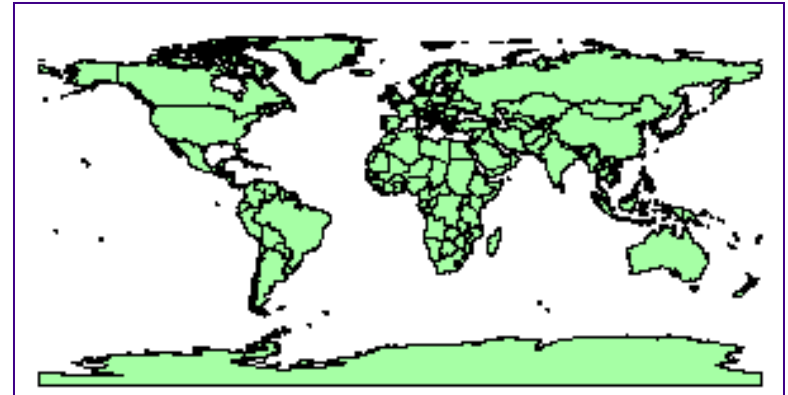
Single symbol

Categories

Quantities

Charts

Multiple Attributes



Categories

Features

Categories

Unique values

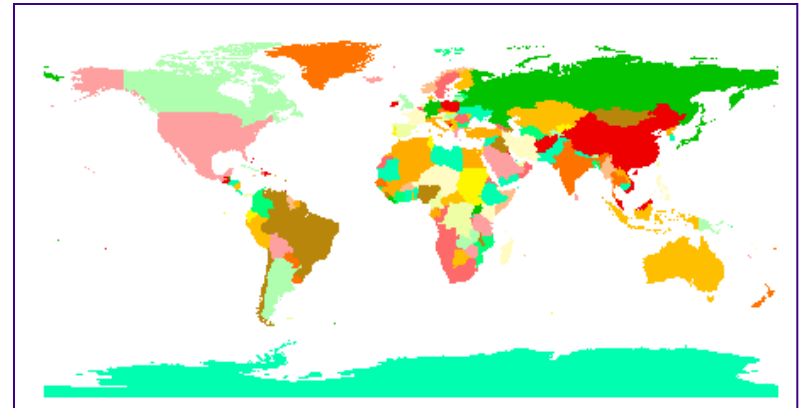
Unique values, many 1

Match to symbols in a

Quantities

Charts

Multiple Attributes



Displaying quantitative values

Quantities

Features

Categories

Quantities

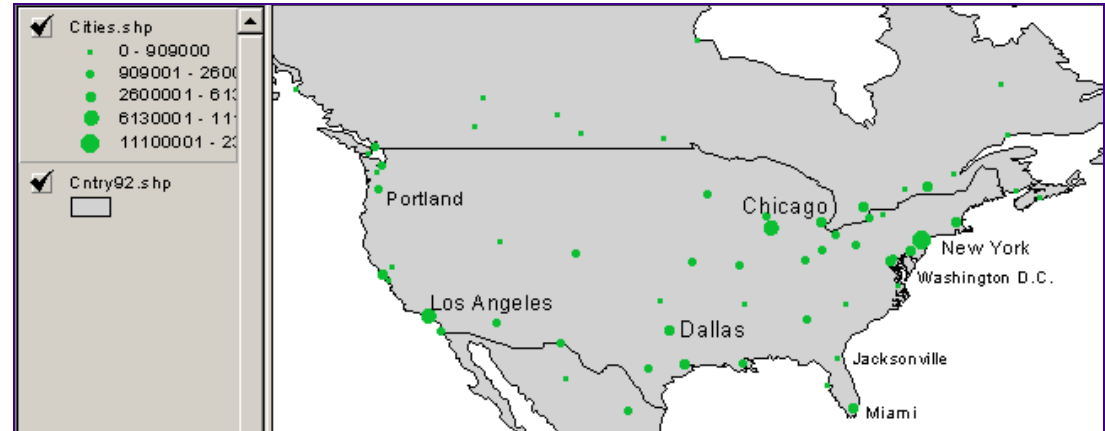
Graduated colors

Graduated symbols

Proportional symbols

Charts

Multiple Attributes



Charts

Features

Categories

Quantities

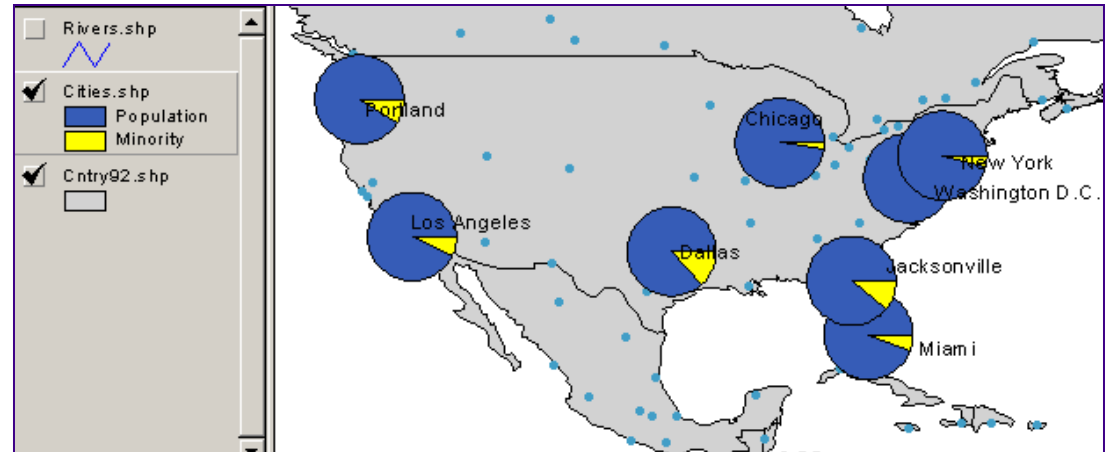
Charts

Pie

Bar/Column

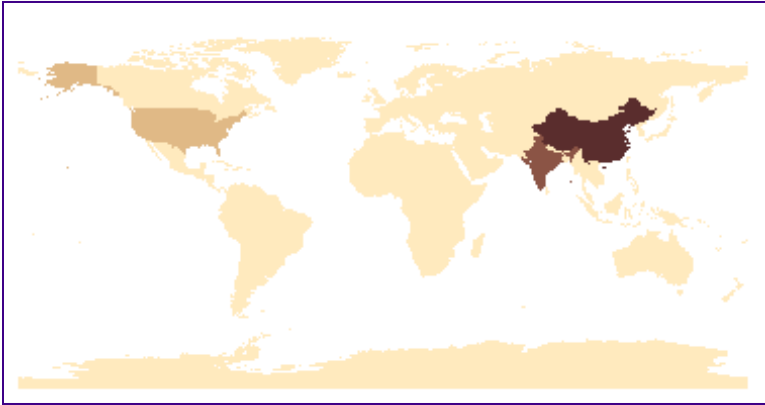
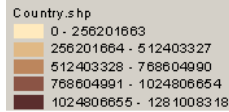
Stacked

Multiple Attributes

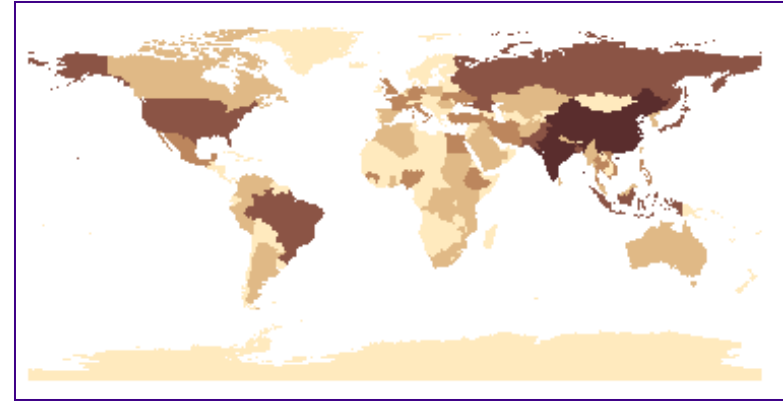
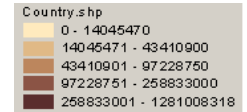


Four ways to classify quantitative values

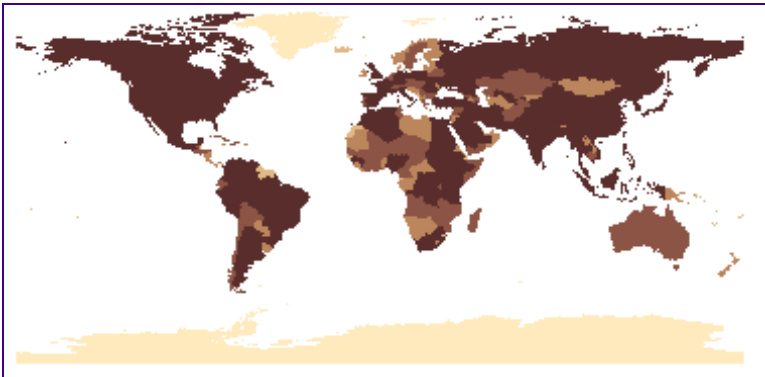
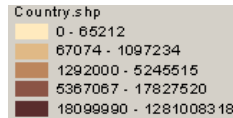
Equal interval



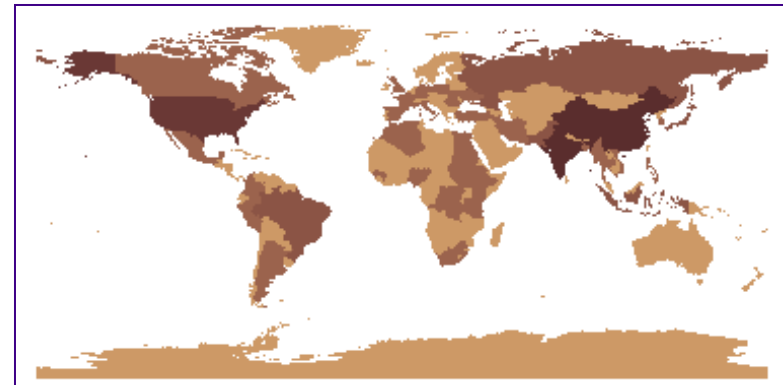
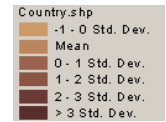
Natural breaks



Quantile

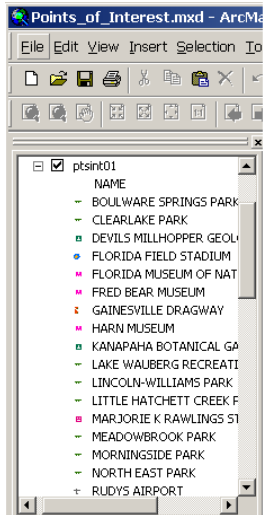


Standard deviation

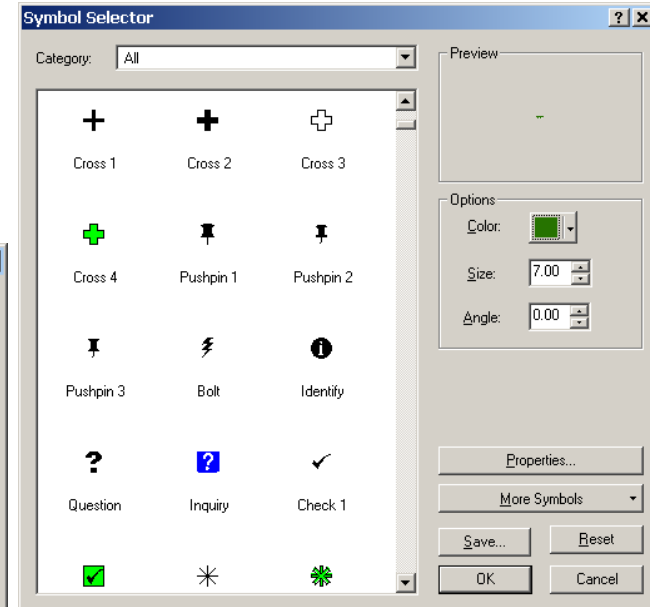
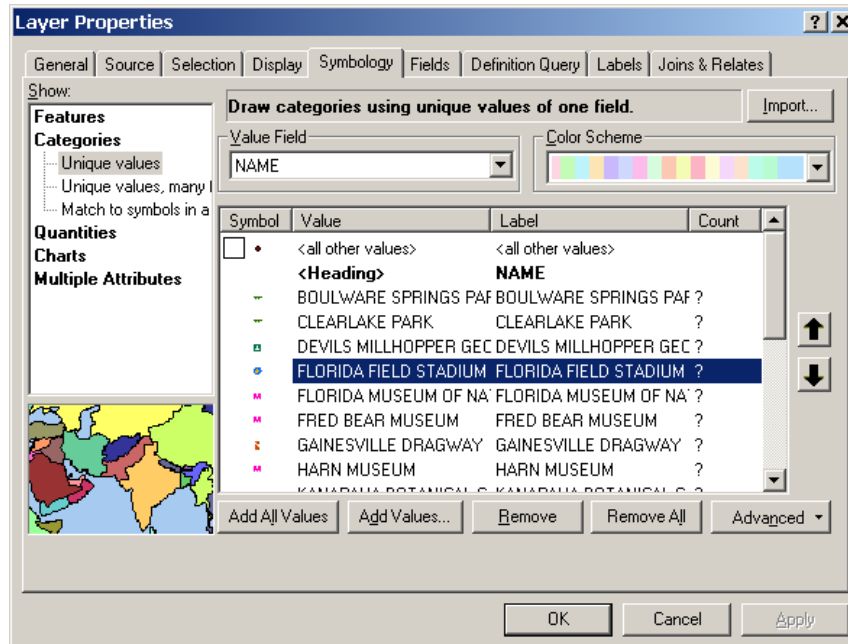


Setting symbol properties

- From the symbology tab or double-clicking



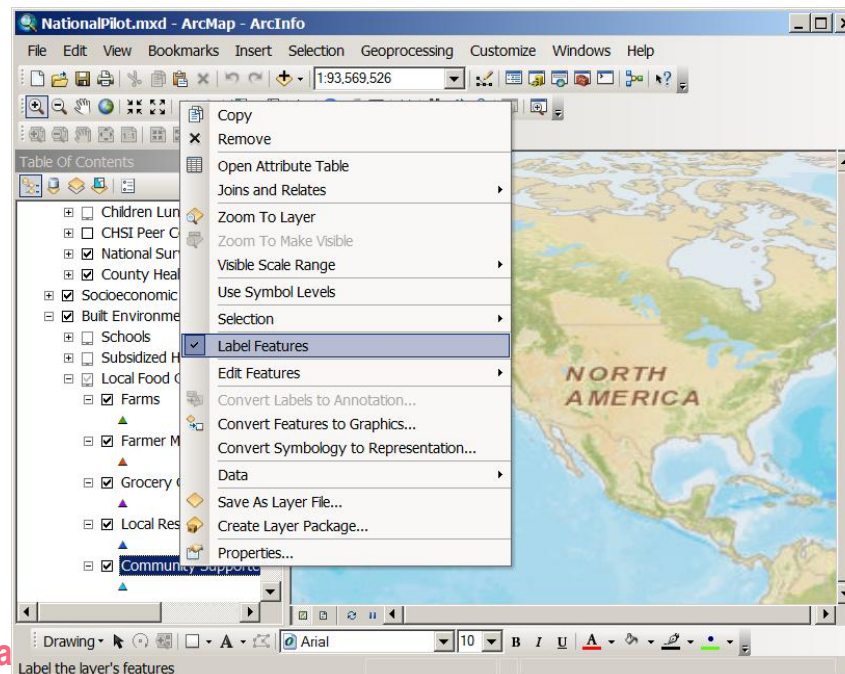
Double-click



Double-click

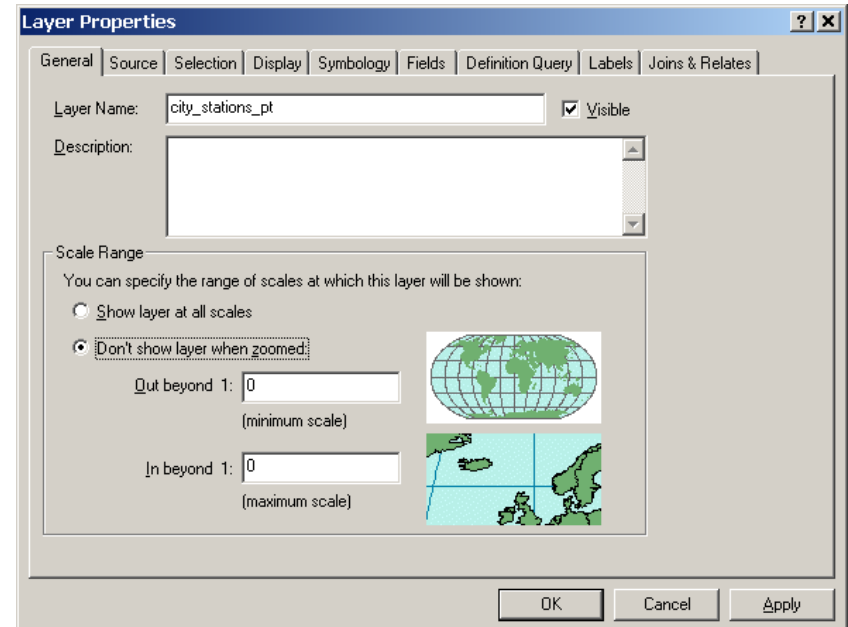
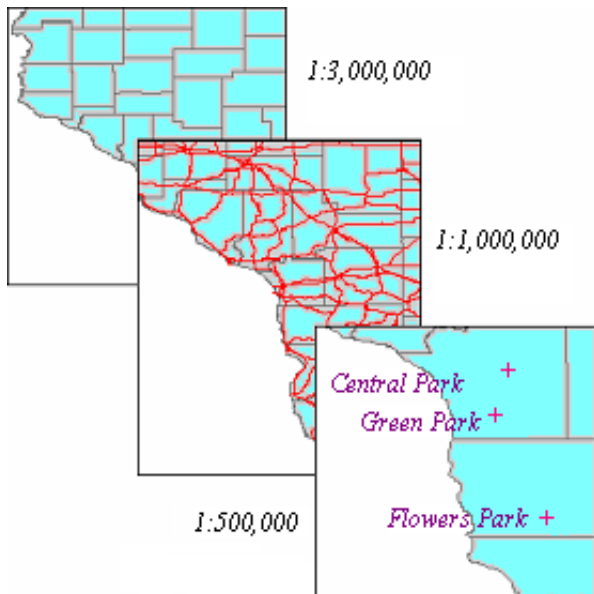
Labeling features

- ❑ Label features dynamically using attribute values
- ❑ Place text interactively on the feature
- ❑ Can set label display scale
- ❑ Convert labels to annotation features if need to edit labels
- ❑ Annotation is a separate feature class, can be loaded
- ❑ Feature linked annotation only in ArcEdit & ArcInfo



Visibility of layer based on scale

- Display layers only at a specific scale range
 - Minimizes cartographic noise
 - Minimizes drawing time
 - Two ways to set it up



Displaying a subset of the data

- ❑ Create a definition query
- ❑ Create the query based on attributes
- ❑ Remember, the source data remains as is, only the map display shows the subset

